

Historic, archived document

Do not assume content reflects current scientific knowledge, policies, or practices.

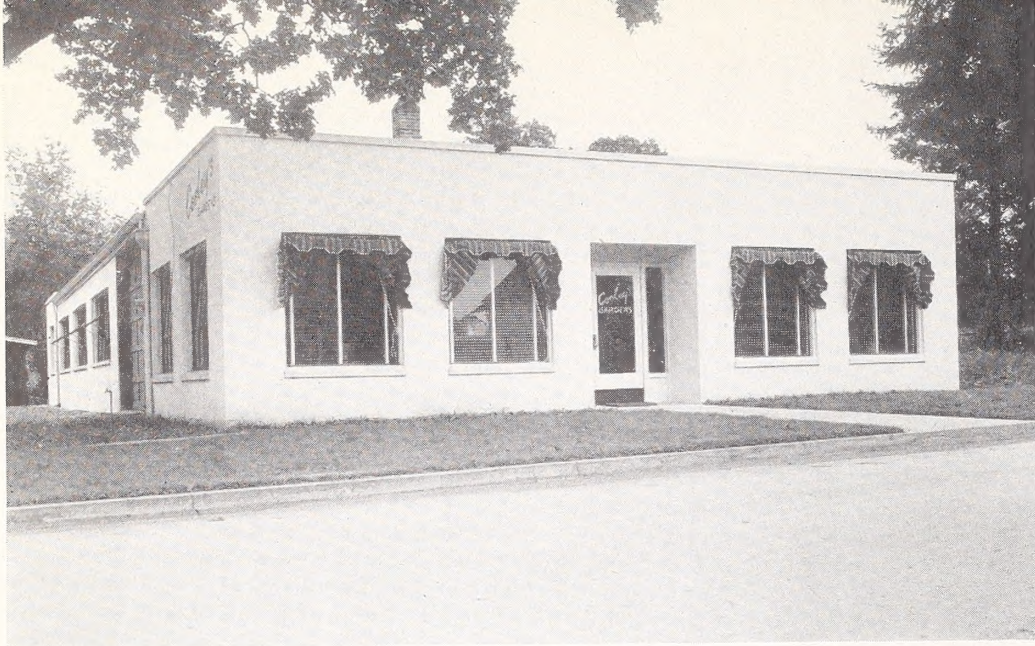
62.71



BRYCE CANYON

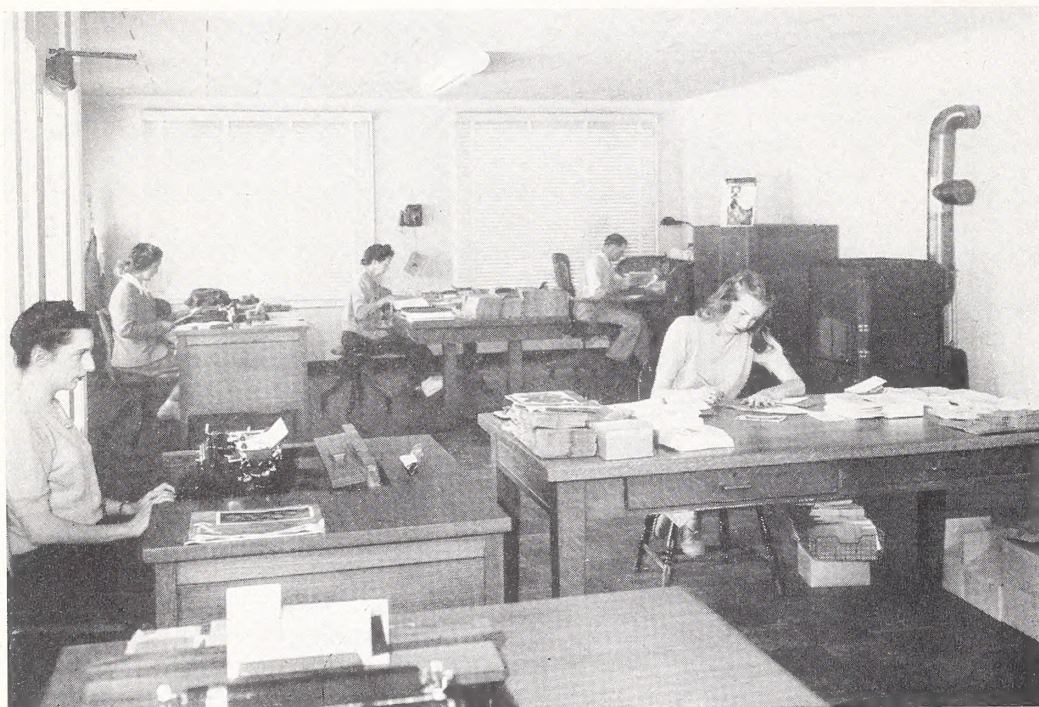
IRIS
DAFFODILS
for
1948

Coolley's
GARDENS
SILVERTON · OREGON



GREETINGS AGAIN From our NEW HOME!

Completed within the past year, that you may be served better with the best of Iris plants, this modern tile and stucco structure was built especially for the purpose it serves—the handling of Iris rhizomes and other bulbs. Its construction marks the 20th year of specializing in Iris and was made possible by the long and continuous patronage of old customers and a constantly growing clientele of new ones.



With an experienced office staff your order is promptly acknowledged, filed, and put on the docket for digging and shipping at the proper time.



This large packing room, well ventilated and with abundant natural light, is the assembly point for the tens of thousands of Iris rhizomes and other bulbs which are shipped each year to customers in every state—Maine to California, Wisconsin to the Rio Grande, and to Canada and many foreign lands.



Before you turn these pages you will want to know about a few essential things, such as

TIME OF SHIPMENT, WHEN TO PLANT, TERMS, ETC.

IRIS will be shipped beginning July 1st and continue through the summer and early fall. Earliest shipments will go to those who simply **MUST** have the plants early, but it is obviously impossible for us to deliver thousands of orders at the outset. During July and August we will ship constantly in the sequence as received. Your success is assured if planted any time during this period, but early ordering is advisable to avoid stock being sold short.

DAFFODILS will be delivered during September and October. That is the proper time to plant them, but orders should be placed as early as possible—they will be filled in rotation and some kinds always sell out fast. No bulb orders accepted after October 15th.

The variety Arctic dominates this scene in our own display garden. Lupines and Columbines lend appropriate contrast.

We are no longer handling Tulips, Hyacinths, Dutch Iris or Crocus.

TRANSPORTATION is by prepaid parcel post or express, whichever we deem most expedient. Be sure to state your express office if different from postal address.

TERMS are cash with the order, either check, draft or money order. We do not advise the enclosure of currency with your order. No C.O.D. shipments—this adds to cost and involves red tape for you and for us.

WE GUARANTEE all plants and bulbs to be true to name, top quality and size, free from insect pests and disease, and to reach you in a live and healthy condition. If for any reason you are not completely satisfied, please notify us promptly.

No Shipments Made During the Spring Months.

This catalog is free to all customers of record over a two-year period, otherwise copies may be obtained for 25c and this amount deducted from first order.

Cooley's GARDENS, SILVERTON, ORE.

ACRES and ACRES of NOTHING BUT IRIS!

We thought you might like to see these pictures too—they tell a little more than immediately meets the eye.

Fifty acres of rich Willamette Valley soil devoted exclusively to one crop—Iris. By rotating the planted area of about ten acres each year, and with cover crops in the intervening years, the soil is always in a renewed condition and produces large and healthy plants annually.

Photographed about the first of September, a new field of Iris that will furnish the next season's crop. Note the uniform growth, condition of soil, and total absence of weeds or grass.



Picture taken the following May, every plant a one-year rhizome. Just nine months before it looked exactly like the picture above!



Six weeks later, the bloom stalks cut off and the crop ready to be dug, divided, trimmed, tagged, packed and on their way to you. Note again the even growth and clean cultivation. Fields are dusted by airplane to insure healthy foliage and disease-free plants. The unbecoming structure in the background is a canvas-topped shelter from the sun for both workers and freshly dug rhizomes.

NEW IRIS INTRODUCTIONS FOR 1948

AN ANNUAL EVENT tied in with the appearance of our catalog has been the presentation of new things from the seedling beds of Dr. R. E. Kleinsorge. As the originator of *Ormohr*, *Daybreak*, *Bryce Canyon*, *Arctic*, *Ranger*, *Grand Canyon*, *Chamois*, *Old Parchment*, *Tobacco Road*, *General Patton*, *Treasure Island*, *Prince of Orange*, *Cascade Splendor*, and numerous others, his reputation is widely and favorably known. His three new ones described below are of the same high degree of excellence.

A NEW PINK IRIS, originated by David F. Hall of Wilmette, Illinois, is herewith offered, also for the first time.



PINK SENSATION

PRETTY QUADROON (Kleinsorge, 1948) **Each \$20.00**

Smooth, metallic, light copper-brown or pale tan, with a hint of lavender and gold as an undertone. The flowers are of faultless form—wide hafts, spreading falls and large, closed standards. The beard is brown. It is a color most difficult to describe but it has much more life and attraction than these coppery tans usually provide. The one seed pod from whence it came (Mexico x Tobacco Road) produced at least six of these interesting blends and we selected this and **VOODOO** as the best and most novel in color. Height 33 to 36 inches.

SUNSET BLAZE (Kleinsorge, 1948) **Each \$20.00**

A tall and huge golden flame-salmon blend, almost a red, but with so much of the gold influence in it that it is not really a red Iris. You have seen the sun look much like this just before it sinks over the horizon. Both standards and falls are extra large and the haft and beard are bright golden yellow. A most impressive flower, blooming very early on widely branched stalks reaching 42 inches.

PINK SENSATION (David Hall, 1948) **Each \$20.00**

From the garden of the world's foremost breeder of pink Irises we selected this new creation when it first flowered in the spring of 1946. That same year it was seen and admired by many Iris critics, including Mr. Harry Randall, president of the Iris Society of England, who gave it special mention in his review of American Iris visits. True delicate light pink, without any influence of lilac or salmon tones, and sporting the famous tangerine or orange-red beard, it is just the kind of pink Iris you have been wanting. **PINK SENSATION** is a large flower, full and rounded in form, with lacinated petal edges. Extremely early—one of the very first of the tall bearded to come into flower. Height about 33 inches.

VOODOO (Kleinsorge, 1948) **Each \$15.00**

A very dark combination of rich chocolate-brown standards and blackish red-brown falls, the entire flower crimped and ruffled at the edges. The broad falls are held stiffly horizontal and the wide standards appear close together and erect, but closed at the top. Average size, medium height. A very rich piece of color and an abundant bloomer. It is a sister seedling of *Pretty Quadroon*.

THE WORLD'S FINEST IRISES



AUBURN

ACTION FRONT (Cook, 1942) **Each \$2.50**

A huge flower of glowing deep coppery red, with extra broad falls and solidly colored haft. Beard is brilliant yellow. A grand grower, with strong stalks and heavy foliage. Height 3 feet.

ALADDIN'S WISH (Murawksa, 1945) **Each \$5.00**

A singularly different Iris, the whole flower is a lovely shade of blue with brushings of cream radiating through the blossom, like the first rays of the sun breaking through a lightly overcast dawn. The colors seem to be brushed or marbled on, rather than blended. Large, tall, and very popular. Shown on page 35.

ALASTOR (Spender, 1940) **Each \$1.00; 3 for \$2.50**

One of the very few exceptional Irises originated in England just prior to the outbreak of the war. This is a beautiful flower in deep pink tones, vivid and alive, with golden center and a golden hazel-brown haft. AM AIS, 1941.

ALBA SUPERBA (J. Sass, 1943) **Each \$7.50**

The newest and best white from the Sass gardens. A huge pure white flower with domed standards and flaring falls, thick substance and well branched stalks. 40 inches tall. HM AIS, 1943.

ALLUMEUSE (Gage, 1938) **Each 50c; 3 for \$1.25**

A great improvement over the old variety Sir Michael. Falls are sort of mahogany-red, standards bright violet-blue with bronze cast. Center is fiery orange, due especially to the golden beard. 40 inches tall. HM AIS, 1938.

ALPINE GLOW (Kleinsorge, 1945) **Each \$5.00**

Large flower of subdued rose tones, bordering on lilac or pale violet. It has a slaty overcast, suggesting the soft colors of mountain valleys at sundown. The beard is gold and there is some brown shading on the haft. A sturdy and well branched stalk 40 inches tall holds the self-colored blossoms well aloft. Petals are crimped like an Oriental Poppy. HM AIS, 1946. See page 8.



GOOD NEWS



GARDEN FLAME

AMIGO (Williamson, 1934) **Each \$1.00; 3 for \$2.50**

This richly colored Iris suggests purple Pansies, with its velvety texture and sharp contrasting shades of blue and violet. It is one of the most popular varieties of all time and in 1945 was given a special award by the English Iris Society. Standards are clear light violet-blue; falls intense violet-purple edged the color of the standards. 34 inches tall, a fine grower and good reliable bloomer. HM AIS, 1936; AM, 1938. Turn to page 16.

AND THOU (Graves, 1942) **Each \$2.50**

A self of palest Wedgwood-blue, with a deeper blue flush in the center of the bloom. Beard deep blue, tipped white. Strong stalks with good branching, bearing large, rounded flowers. 40 inches tall. HM AIS, 1942.

ANGELUS (Egelberg, 1937) **Each 50c; 3 for \$1.25**

In color a bright light pink, with slight lavender iridescence just below the lemon beard. Throughout the center there is a delicate infusion of lemon-yellow. Large, husky stems, 3 feet tall. Very late. HM AIS, 1939.

ANITRA (H. Sass, 1936) **Each 40c; 3 for \$1.00**

A silvery sky-blue, pure in color, of great size and beautiful form. Particularly effective and strikingly blue in late afternoon and early evening. Midseason; average height. See page 18.

ANNA WILLIAMSON (Cook, 1946) **Each \$7.50**

A lovely bright bicolor pink, the standards lighter than the falls. The pink tone is on the rosy side, with an underlying yellow suffusion. Large flower, broad petals and ideal form, three feet tall. HM AIS, 1946.

ARCTIC (Kleinsorge, 1940) **Each 75c; 3 for \$2.00**

Here is one of the most beautiful and best Iris originated by this famous raiser of notable seedlings. A huge white and gold flower of perfect form, with ruffled but closed standards and broad falls that are as smooth as white enamel. There is an area of bright yellow throughout the center of the flower and the standards have a creamy tint. Established plants will produce spikes four feet and over in height, with as many as six open foamy flowers at one time. HM AIS, 1941; AM, 1942. See at right and also page 3.

AUBANEL (Cayeux, 1935) **Each 75c**

This pink blend from France is one of the loveliest Irises ever received from that country and one of the nearest to pink in color. It is large and well formed, sort of shrimp-pink with a good deal of yellow in the center. Very limited stock.

AUBURN (Kleinsorge, 1945) **Each \$10.00**

This is certainly a new color in Iris—at least we have never seen anything like it. The name Auburn was selected because it seems especially suited to the flower. Both standards and falls are a coppery henna-brown, with an undertone of gold, and the falls have a brilliant patch of blue in the center at the tip of the beard. This is a remarkably vivid Iris which glows when seen a block distant. Very early, with 36-inch stems. Color plate on opposite page is very close. HM AIS, 1946.

AZURE SKIES (Pattison, 1943) **Each \$3.00**

Originally called "Summer Skies" by Mrs. Pattison, the originator, this is a self of pale azure-blue with firm domed standards and flaring, almost horizontal falls. The flowers are beautifully ruffled and have wide hafts, surmounted by a white beard. Declared by many to be the most lovely of all light blue Iris to date. 36 inches. AM AIS, 1945. See page 10.

BAGHDAD (Whiting, 1946) **Each \$15.00**

A deep, strong yellow, overlaid with a metallic finish of burnished brass. Of pleasingly flaring form, very heavy in substance. This is a strong grower, nicely branched, hardy and increases rapidly. A real "brass-yellow."

BALMUNG (H. Sass, 1939) **Each \$1.50; 3 for \$4.00**

Just about the finest, in our opinion, of all the Sass series of yellow Plicatas. The ground color is a definite yellow and the markings are peppered on in cinnamon-brown. Note the illustration—it is a perfect likeness. Much larger than others of this series, with tall stems and good habit. HM AIS, 1940; AM, 1942. Shown on page 17.

BANDMASTER (Hall, 1944) **Each \$5.00**

A very large, vigorous growing and free blooming medium blue, a few shades lighter than The Admiral and deeper than Great Lakes. The color holds up unusually well. Immense foliage and heavy stems 36 to 40 inches tall. HM AIS, 1944.

BATAAN (Kleinsorge, 1942) **Each \$3.00**

This is a very dark blend of coppery plum, henna and rich brown. Freshly opened flowers exhibit a pronounced henna cast, some of which is missing in the illustration on page 32. Distinctive and attractive shape and something apart from the usual run in Iris colors. Height 3 feet or slightly over.



ARCTIC

BERKELEY GOLD (Salbach, 1942) **Each \$2.50**

This fine yellow continues to hold a place near the top in the list of 100 best Iris. Absolutely perfect in form, on stems that average three feet and over, well branched and with flowers of very rich solid yellow, it is regarded by many judges as the world's best yellow Iris. HM AIS, 1944; AM 1946.

BERMUDA SAND (Hall, 1939) **Each \$1.00; 3 for \$2.50**

A glorified and gigantic Jean Cayeux, both standards and falls heavily ruffled. Deeper in color than Jean Cayeux, a light coffee-tan with a glint of gold. Freshly opened blooms are reddish gold. Strong growing with broad foliage and sturdy bloom stalks.

BERTHA GERSDORFF (J. Sass, 1942) **Each \$2.50**

An oddly feathered flower of pale yellow, marked with rosy purple in a most unusual manner. Standards pinkish shading to yellow; falls yellow brushed with rose-purple. Large blooms, lots of them, on 3-foot stems.

BLACK BANNER (Nicholls, 1947) **Each \$7.50**

Velvety, intensely colored near black. Sleek and rich in its midnight hue, with practically solid dark hafts. Introduced last year it was awarded an HM by the American Iris Society. Increases very rapidly and grows well everywhere. Height 3 ft. HM AIS, 1947.

BLACK & GOLD (Kleinsorge, 1943) **Each \$5.00**

Standards rich pure chrome-gold; falls solid blackish maroon with some marking at the haft. Well named, it provides a most striking contrast of rich colors. Tall and well branched.

BLACK FOREST (Schreiner, 1945) **Each \$10.00**

"Black as pitch," says the introducer. A rich, silky, ebony blue-black, the effect of which is intensified by a very solid haft and a blackish blue beard. Medium in height, with flaring falls. A very startling new introduction. HM AIS, 1946.

BLUE FRILLS (Stephenson, 1946) **Each \$7.50**

Pure azure-blue, darker than Great Lakes but still a light blue Iris. Clear and uniform in color, the flowers rounded in style, and of a rich glossy texture. The blue tinged beard adds to the color note. 34 inches.



ALPINE GLOW

BLUE RHYTHM (Whiting, 1945)

Each \$10.00

Very large flowers of Cornflower-blue, softened by a silvery overtone. The large standards are arched and domed, the broad falls are semi-flaring with smoothly colored hafts. Growing from 3 to 4 feet in height, perfectly branched, we consider it just about tops as a blue Iris. HM AIS, 1945; AM, 1947.

BLUE SHIMMER (J. Sass, 1942)

Each \$4.00

An entirely different Plicata. Clean, sparkling white with an all-over pattern of clear blue stippling. The blue seems to be peppered on the white background in an even manner, rather than in the familiar buttonhole-stitch style. The flowers are extremely large and full. Certainly one of the most outstanding Irises of the past few seasons. HM AIS, 1942; AM, 1944. See page 22.

BLUE VALLEY (K. Smith, 1947)

Each \$25.00

This new Iris, a seedling of Lake George crossed with Great Lakes, has been the subject of much praise and comment. Very near to true blue, ruffled and large in size, it possesses an unusual sparkling sheen. Few plants. HM AIS, 1947.

BRIGHT LIGHTS (Schreiner, 1946)

Each \$7.50

Actually a yellow Plicata along the lines of Tiffanja, but with less of the Plicata pattern and a more yellow and white contrast. The falls carry a central patch or "blaze" of almost pure white. The stitchings are soft brown. A very colorful clump. Shown on page 31.

BRUNHILDE (Salbach, 1934)

Each 50c; 3 for \$1.25

Very dark, uniform violet self, including an unusual blue beard. A most regal Iris of great color intensity, with splendid stems and widely flaring blossoms.

BRYCE CANYON (Kleinsorge, 1944)

Each \$10.00

A distinct and warm shade of henna-copper, self colored and so named because of the similar colors found in the rock formations of one of America's most famous tourist attractions. It has especially broad hafts, large, rounded falls, and finely held standards. The picture on the front cover is an excellent likeness. Bryce Canyon achieved instant popularity. Awarded HM AIS in 1945; AM in 1947, and is in sixth position in this year's list of 100 most popular Iris. A good grower everywhere, hardy, 3 feet and over in height.

BUFFAWN (Andrews, 1940)

Each 75c

If you are looking for an Iris of unusual coloring and with the most brilliant tangerine beard, this is it. A soft pinkish buff self, hard to describe, set off with a very red-orange beard. Nicely shaped, prolific bloomer and attracts wide attention.



CHAMOIS



CASA MORENA



CASCADE SPLENDOR

CASA MORENA (DeForest, 1943) **Each \$6.00**

Large flowers—yes, extra large—of deep, glistening, rich brown. Same solid color on standards and falls. Styles yellowish; beard brownish orange. Not just a novelty, but a flower that adds an entirely new, rich note to the garden picture. See the accurate picture on page 8—the picture, of course, is much reduced in size. Height 38 inches. HM AIS, 1944; AM, 1946.

CASCADE SPLENDOR (Kleinsorge, 1945) **Each \$10.00**

Very large ruffled pink, tan and apricot blend, with extra heavy stalk 40 inches tall and bearing up to ten flowers. The ruffling is more pronounced than in any Iris we have ever introduced and is most unusual in so large an Iris. It blooms quite late. HM AIS, 1945; AM, 1947. See at left for an excellent kodachrome of this flower.

CHAMOIS (Kleinsorge, 1944) **Each \$10.00**

One of the largest Irises we have ever introduced, beautifully formed, both standards and falls waved at the edges. It is pure chamois in color, standards and falls identical, the beard yellow, tipped bronze. There are no veinings or markings of any kind; the petals have a soft, satiny finish and glisten with myriad frosty particles. We are certain that you will find this Iris different from any other you have ever seen. HM AIS, 1945. Shown in color on page 8.

CHANTILLY (Hall, 1945) **Each \$7.50**

A ruffled orchid-pink. The edges of both standards and falls are so heavily ruffled and frilled that they have the appearance of being edged with lace of a lighter shade than the rest of the flower. From the same line of breeding as the famous Flamingo Pinks. 36-inch stems, strong and well branched. HM AIS, 1945; AM, 1947.

CHEERIO (Ayres, 1934) **Each 35c; 3 for 90c**

In the red class it has no peer at the same price. It is tall, vigorous, dependable, and a striking red Iris in the garden. Not as red as some of the new ones, but remains one of the most popular sorts in our catalog.

CHINA MAID (Milliken, 1936) **Each 75c; 3 for \$2.00**

Gigantic pink blend, with copper and gold tones smoothly blended into a harmonious whole. The effect is a luscious pink. A rampant grower, producing stalks that reach 4 feet, with a myriad of delightfully formed big flowers. HM AIS, 1938; AM, 1939.

CHRISTABEL (Lapham, 1936) **Each 50c**

Continues to hold its own with the newest red introductions. It is brilliant and very red in effect, glorious as a garden clump. Almost a self, smoothly finished, large in size and about three feet in height. HM AIS, 1936; AM, 1938.

CITY OF LINCOLN (H. Sass, 1936) **Each 60c; 3 for \$1.50**

Brightest, largest, and surely the finest of all true Variegatas. Clear golden yellow standards, broad, fiery red falls, startling in their contrast. When well grown on an established plant it is unbeatable. HM AIS, 1937; AM, 1939. See page 21.

CLOTH OF GOLD (Whiting, 1945) **Each \$4.00**

To say that this is another excellent deep yellow would attract scant interest. But last spring we saw a great many wonderful seedlings and new named varieties in Mrs. Whiting's Iowa garden. One of the best displays in the planting was a group of Cloth of Gold—deep in color, perfectly formed, tall and stately. We highly recommend it as one of the very finest yellows. HM AIS, 1947.

CLOUD CASTLE (Graves, 1944) **Each \$5.00**

Exquisite Wistaria-blue with mauve undertone, a very large and majestic Iris. The falls are slightly waved and ruffled, broad and widely flaring. A fit companion to Azure Skies, taller and more on the mauve side than blue. HM AIS, 1944.

COPPER LUSTRE (Kirk., 1934) **Each 50c; 3 for \$1.25**

Entirely different from all others, its great popularity has resulted not only from the odd and beautiful copper tone of its flowers, but also from the fact that it performs well in all sections of the country. It positively glows in its bright copper, gold, and pinkish tan blendings. Dykes Medal, 1938.

BURGUNDY ROSE (Hall, 1946) **Each \$7.50**

Ruffled dark rosy amethyst, a very strong and bright splash of color in the garden. The falls carry rather prominent veins of darker tone. A self, borne on heavy, well branched stalks just slightly under 3 feet in height.

CALIFORNIA GOLD (Mitch., 1933) **Each 35c; 3 for 90c**

By all odds the best value in a yellow Iris at anywhere near the price. It is an easy grower and free bloomer, a deep glittering yellow of very large size and surpasses everything in its color except the recent novelties.

CAMEROUN (Cayeux, 1938) **Each \$1.50**

A but little known French Iris of velvety blackish hue, one of the best we have ever grown. The blooms are huge, almost black, with a beautiful sheen and very broad falls. Our stock is limited.

CAPTAIN WELLS (Cook, 1941) **Each \$2.50**

Deep glossy maroon-purple; a large, rich, solidly colored self, neat and finished in appearance. There are no haft markings, and beard is a subdued bronze-yellow. Possesses a wonderful "shine" or gloss that gives it life despite its unusual darkness. HM AIS, 1942; AM, 1943.



GOLDEN FLEECE

DAYBREAK (Kleinsorge, 1941)

Each \$3.00

Huge golden pink, with slight undertone of copper. The flowers are well shaped, with closed standards and falls that are semi-flaring, but there is a suggestion of ruffling in the entire blossom. The name is most appropriate. Daybreak has a proud record: HM AIS, 1942; AM, 1943; runner-up for Dykes Medal in 1945; TIED FOR DYKES MEDAL IN 1946. We have fine rhizomes this year, and lots of them. Shown on page 11.

DEEP VELVET (Salbach, 1939)

Each \$1.50

A striking introduction, one of the richest and best dark Irises we have yet seen. Self colored in very dark, yet bright, blackish red-purple, with perfectly formed blossoms of very large size. Brownish suffusion at the haft, with deep bronze beard. HM AIS, 1941; AM, 1942.

DESERT SONG (Fay, 1946)

Each \$15.00

New cream self, beautifully ruffled and with extra large flowers of excellent proportion. Texture is especially heavy and the flowers last a long time in either rain or heat. Stems reach a height of 3 1/2 feet. HM AIS, 1946.

DESTINY (Burgess, 1934)

Each 50c; 3 for \$1.25

A great heavy flower of deepest blackish bronze-purple, the beard rich golden bronze. From New Zealand, and credit is due the originator for having made it possible for American gardens to enjoy such an outstanding Iris. It has all good points—excellent form, tall stems, and succeeds everywhere.

DISPLAY (Grant, 1942)

Each \$3.00

One of the darkest and richest reds we have ever bloomed in our garden. Almost black in certain lights, it glows with a hidden fire in others. Described as Spanish red, shading to deep maroon, it has but little of the purple influence in it. No veining at the haft; yellow beard flecked brown. About 3 feet tall. HM AIS, 1942.

AZURE SKIES



COPPER RIVER (DeForest, 1945)

Each \$10.00

Glistening tan; falls overlaid bright new penny copper. The ruffled flaring form of this new Iris, coupled with its brilliant sheen, makes it most attractive. 36 inches, well branched.

COPPER ROSE (Cook, 1941)

Each \$2.50

A smooth blending of old rose, tan and copper, brightened by a glow of golden yellow at the center. Standards between buff-pink and Japan-rose; falls between terra cotta and ochre-red. Coloring is rich and bright, the flowers medium to large in size, with very wide standards and falls. HM AIS, 1942; AM, 1943.

CORDOVAN (Kleinsorge, 1946)

Each \$7.50

A seedling of Bryce Canyon. The coloring is close to that of cordovan leather—a deep coppery oxblood tone, very rich and glossy. Standards are coppery rose-red, the hafts are finely netted with minute webbing and the falls have a distinct frill or ruffle. HM AIS, 1947.

DAMERINE (Gage, 1939)

Each \$1.00; 3 for \$2.50

This fine red, not so well known, is a real surprise in this color group. A large flower of deep red, the standards domed and the falls flaring. Near the shade of Christabel, very velvety and uniform in color. Bronze Medal at the New York World's Fair in 1940.

DISTANCE (Cook, 1946) **Each \$12.50**

Silvery light blue, smooth in finish and very evenly colored. There is no coarse veining in the flower and almost no markings at the haft. The white beard is quite inconspicuous. Selected from hundreds of blue seedlings by the originator of such things as Sable, Dreamcastle, Pink Reflection and Capt. Wells. HM AIS, 1946.

DOGROSE **Each 40c; 3 for \$1.00**

Deep rose-pink self, on very tall, wiry stems. We originally imported this Iris from England several years ago and have constantly had difficulty in keeping enough stock to offer. A very free bloomer, it is of medium size but makes a most colorful and effective pink garden clump and is a beautiful cut flower in the house.

DREAMCASTLE (Cook, 1943) **Each \$10.00**

An orchid-pink self, the segments very broad and of bright clear tones. The white beard, tinted lemon at the base, tends to emphasize the solid pink effect. One of the most sought after varieties and stock is very scarce. We have a few plants only. See at right.

DRESS PARADE (Maxwell, 1944) **Each \$5.00**

A new type of Variegata with an unusually smooth haft. Standards burnished gold; falls solid brownish red without any markings. Beard is heavy and rich golden orange in color. Height 3 feet.

E. B. WILLIAMSON (Cook, 1937) **Each 40c; 3 for \$1.00**

Glowing coppery red blend; it stands in a special niche all its own, because it is neither red nor copper. Large flowers of silky texture, fragrant, on 3-foot stems. HM AIS, 1938; AM, 1939.

EDWARD LAPHAM (Lapham, 1942) **Each \$4.00**

A very fine new red by the man who produced Red Gleam. The coloring is rich and glossy, deep but bright maroon-red; the blooms trimly tailored with no haft venation and a brownish touch near the center. Bronze-gold beard. Height about 3 feet.

ELLA CALLIS (H. Sass, 1942) **Each \$4.00**

For sheer brilliance here is an Iris that will constantly catch the eye of every visitor. It is a huge deep yellow with the falls flushed orange. The striking feature about it, however, is the infusion of orange-red on the falls, sort of brushed on, particularly about the center. It is not a Plicata and can hardly be called a blend. One of the most distinct of all Sass Irises.

ELMOHR (Loomis, 1942) **Each \$1.25; 3 for \$3.00**

Winner of the Dykes Medal in 1945, this rich red-violet seedling of Wm. Mohr has acquired the greatest popularity in the shortest time of any Iris ever introduced. One of the very largest of all Irises, the great blooms are daintily ruffled, of a silky texture and remarkable substance. The stems are well branched and at least three feet tall. Because it has proven to be hardy everywhere and increases rapidly, the price has reached a point where every genuine Iris connoisseur can and should own it. HM AIS, 1942; AM, 1943. Shown in color on the back cover and on page 23.

EL MOROCCO (Becherer, 1945) **Each \$2.50**

A beautiful opal-pink Iris whose broad rounded falls and leather-like substance quickly attracts attention. About half way between the colors of Angelus and Morocco Rose; well branched, 36 inches tall.

ELSA SASS (H. Sass, 1939) **Each 60c; 3 for \$1.50**

An entirely new shade of yellow, clear sulphur, with a greenish cast in its depths and a near white blaze near the haft. The blossoms are of good size, rounded in form and slightly frilled at the edges. 3 feet tall. HM AIS, 1939; AM, 1944. See page 20.

EROS (Mead-Riedel, 1934) **Each 40c; 3 for \$1.00**

Very tall salmon colored self, the throat lit with gold. Stems are slim but stout, and the flowers are produced in great profusion. Increases rapidly, making a splendid mass of solid salmon-pink. HM AIS, 1934.

EXCLUSIVE (Grant, 1937) **Each 40c; 3 for \$1.00**

Soft powder-blue self, quite different from all other blues. Tall and stately, with blooms of perfect form and thick enamel finish. Just a suggestion of yellow in the center to liven it up. HM AIS, 1937; AM, 1939.

EXTRAVAGANZA (Douglas, 1944) **Each \$15.00**

Almost white standards shaded cream at the base, the falls a medley of copper, red, lavender and deep violet, with a violet flush down the center. On the order of Wabash, but is more of a blend especially in the falls. One of the most talked about new things. HM AIS, 1944; AM, 1947.



DREAMCASTLE



DAYBREAK



GALLANT LEADER

FAR WEST (Kleinsorge, 1936) **Each 50c; 3 for \$1.25**

One of the loveliest of all blends, a rare mixture of salmon and golden sand, of coral and henna, with a soft glow at the heart. Height 3 feet and over. Far West is the parent and grandparent of many of Dr. Kleinsorge's finest seedlings. HM AIS, 1937.

FIRECRACKER (Hall, 1943) **Each \$5.00**

A glowing dark burgundy-red Plicata, with yellow trim. The flowers have good substance, are well formed and are carried on fairly well branched, stout, 32-inch stems. The depth and richness of color commands the attention of every visitor. Shown below.

FLAMELY (Cook, 1942) **Each \$2.50**

A glowing red self, the color more orange than purple—a "hot" red. Flowers medium to large and produced in abundance. Increases rapidly. A redder E. B. Williamson. HM AIS, 1944.

FLORA CAMPBELL (Hill, 1940) **Each 75c; 3 for \$2.00**

A new russet-red, or perhaps "peach-red" would be more appropriate. It has the deep, warm tones of brownish red seen on the darkly colored side of a luscious ripe Peach. A glowing, rich Iris, very large and handsomely formed, not nearly well enough known. HM AIS, 1940.

FLORA ZENOR (J. Sass, 1942) **Each \$1.00; 3 for \$2.50**

Something entirely different in color—a melting cameo-pink that has been referred to as "like the foam on a Strawberry soda." It has lines of heavier color near the haft, with a most startling shrimp-beard. Not large, it is an Iris to be enjoyed as a clump for its most novel color. HM AIS, 1942; AM, 1944.

FLORENTINE (Cayeux, 1937) **Each \$1.00; 3 for \$2.50**

A Plicata that is really individual in style—the white ground color is entirely dotted with soft blue, with such an over-all effect that the flower seems quite submerged in flaky blue dust. Enormous in size, with very tall stalks and good branching.

FORTUNE (Kleinsorge, 1941) **Each \$1.00; 3 for \$2.50**

Solid and uniform old gold, a flower of startling size and broadly spreading form. The color is not dull, but very much alive due to a peculiar overlay of "rusty red" that seems to come from nowhere but is apparent in all parts of the flower. Of medium height, the gigantic blooms are on a level that permits full observation of their size and beauty. In color on page 32.

FORTUNE'S FAVOR (DeForest, 1944) **Each \$6.00**

Really a giant in size, this new blend has about everything one could ask for in a good Iris. The tan standards are broad and closed. The very wide falls are rounded and colored a glistening tan overlaid with lavender flush. Slightly waved and ruffled, lit up by an extra heavy deep yellow beard.

FRANCONIA (Graves, 1942) **Each \$7.50**

As cool and classic as white marble, a gigantic and perfectly formed white Iris which may be the best white of all. Certainly it is as fine as any we have ever grown and we recommend it without hesitation. Originated in New Hampshire, its hardiness is unquestioned. HM AIS, 1942.

FRANK ADAMS (Lapham, 1937) **Each 50c; 3 for \$1.25**

A tall and very well proportioned large Iris with rosy tan standards flushed yellow and rosy red falls. It is not a true Variegata but might be called a Variegata blend. The colors are not harsh and blend well in the garden schemes. Flowers, stalk and foliage are unusually large size. HM AIS, 1938; AM, 1940. Shown in color on page 20.

FRIEDA MOHR (Mohr, 1926) **Each 35c; 3 for 90c**

One of the all-time Iris greats. A massive lilac-pink or light rosy violet flower with broad, spreading falls. When established and well grown, this Iris will reach five feet in height, with stalks and foliage in proportion. Far from new, it still thrills all who see it. See page 19.

GALLANT LEADER (Wiesner, 1939) **Each \$1.00**

Broad and well arched standards of deep rose-red; falls velvety maroon touched with coppery gold, especially at the haft. A flower of staggering size, impressive in its richness and regal carriage. 40 inches tall. HM AIS, 1939. Shown above.

GARDEN FLAME (H. Sass, 1941) **Each \$3.00**

A very deep rose-mahogany, if you can imagine such a color. Called by some judges rose-red, but it is nearer garnet, with a deep rose and brown area about the center. It has no haft markings, making it one of the richest and handsomest of all dark Irises. Large, with very broad falls, and it blooms quite late. HM AIS, 1940; AM, 1943. In color on page 6.



FIRECRACKER

GARDEN GLORY (Whiting, 1943)

Each \$7.50

A pure self of rich Bordeaux-red; a seedling from Red Douglas crossed with Garden Magic. This is one of the nearest to true red of any Iris ever flowered in our gardens; pure, deep and rich, with no haft venation whatsoever. Smoothly finished with deep bronze-gold beard. Height 33 inches. HM AIS, 1945; AM, 1947.

GARDEN MAGIC (Grinter, 1936)

Each \$1.00; 3 for \$2.50

A very late, very large, and especially velvety deep red self. After more than ten years it continues to hold its own, right up front among the best red Irises. Many people will hardly believe it costs only a dollar! Has not increased fast and supply is usually short. HM AIS, 1937. See color cut on page 16.

GAY SENORITA (Salbach, 1944)

Each \$3.00

Large round standards of deep honey-yellow, broad semi-flaring falls of golden yellow ground color, heavily overlaid deep brown with deeper brown veining over the whole surface. Falls are fluted at the edges. This is a brand new Iris of most unusual appearance; it does not fade in the sun and the stalks are well branched and 36 to 40 inches tall. HM AIS, 1945.

GENERAL PATTON (Kleinsorge, 1947)

Each \$20.00

A solid copper-brown self, liked by some critics as Dr. Kleinsorge's finest production to date. Compared with Bryce Canyon, of which it is a seedling, it is much darker, richer, and appears brown rather than terra cotta in tone. A metallic undertone makes it glisten in the sun. HM AIS, 1947.

GLORIOLE (Gage, 1933)

Each 50c; 3 for \$1.25

An Iris of huge size with pale blue petals overlaid with frosty crystal-like particles. Wonderfully well formed and a noble flower, waved and ruffled. Sometimes called "ice-blue." Height 40 inches. HM AIS, 1933; AM, 1935.

GOLDBEATER (Kleinsorge, 1944)

Each \$4.00

This is the oft-mentioned yellow of the AIS Bulletins, a solidly colored chrome-yellow self that has invariably drawn praise from judges. It is all yellow, deep and bright, without markings or blendings of any kind and the buds themselves are like gobs of deep yellow paint. A good grower, fast increaser, and will make a glorious garden display. Large flowers, excellent branching. HM AIS, 1945.

GOLDEN EAGLE (Hall, 1942)

Each \$1.50

Brilliant light yellow, with a satiny sheen. One of the largest of all Irises, it is clear, even yellow throughout, without a trace of amber or other shadings. A rapid increaser and easy grower. Mr. Hall considers this one of his best introductions. HM AIS, 1942.

GOLDEN FLEECE (J. Sass, 1940)

Each \$2.00

A big lemon colored flower with creamy falls edged gold. Beautifully ruffled, huge in size, tall and a good grower. The illustration on page 10 is an excellent likeness. HM AIS, 1940; AM, 1942.

GOLDEN HIND (Chadburn, 1934)

Each 40c; 3 for \$1.00

The deepest golden yellow of all. Of medium size and height, with horizontal falls, it is the standard used by most breeders in their efforts for the perfect solid yellow. Very fast increaser and makes a startling golden mass in the garden. HM AIS, 1937.

GOLDEN MAJESTY (Salbach, 1938)

Each 75c; 3 for \$2.00

For a deep yellow with all good habits we can recommend Golden Majesty above all others in this price field. A big flower with broad falls and closed standards, does not fade in the sun and has proven reliable everywhere. 40 inches tall. HM AIS, 1939; AM, 1940. See above.



GOLDEN MAJESTY

GREAT LAKES

SNOW FLURRY

GOLDEN RUSSET (Hall, 1946)

Each \$8.00

The unusual feature of this flower is its great size. In line with the name, it is golden russet in color—a self. The enormous flowers are seven inches high and nine inches wide, with broad hafts. Grows to 40 inches on very heavy stalks. Will evoke many "ohs" and "ahs" from visitors. HM AIS, 1947.

GOLDEN SPANGLE (Cassebeer, 1944)

Each \$3.50

Deeper yellow than Golden Fleece but with a somewhat similar color arrangement. Domed yellow standards; falls clear white with heavy gilding of rich yellow forming a complete border. The orange beard brings out in sharp contrast the white area of the falls. Tall, with many flowers beautifully poised and ruffled. HM AIS, 1944.

GOLDEN SPIKE (Whiting, 1940)

Each \$1.00; 3 for \$2.50

A very popular deep yellow with stunning rich orange beard. One of the deepest colored of all the yellows, it does not fade, has several flowers open at one time, and is both large and tall. HM AIS, 1940; AM, 1942.

GOLDEN TREASURE (Schreiner, 1936)

Each 50c; 3 for \$1.25

Solid deep cream, but with an outpouring of rich, golden orange all about the central portion of the flower. Tall, perfectly branched, very floriferous, it will stand out in a planting of hundreds of varieties. HM AIS, 1936; AM, 1938. See page 21.

ANNUAL \$5.00 COLLECTION

**Any Ten, Your Choice
for \$5.00**

Labeled and Postpaid, 1 of a Kind

In making up your selection, be sure to confine it to the groups as outlined.



WABASH

**Any 3 from
this group**

Alastor
Flora Zenor
Fortune
Garden Magic
Golden Spike
Grand Canyon
Great Lakes
Matterhorn
Sable
Melitza
Red Gleam
The Red Douglas

**Any 4 from
this group**

Stardom
Arctic
City of Lincoln
Wabash
Elsa Sass
Prince of Orange
Stained Glass
Snoqualmie
Louvois
Ming Yellow
Morocco Rose
Lighthouse
Golden Majesty
China Maid

**Any 3 from
this group**

Midwest Gem
Miss California
Ormohr
Angelus
Siegfried
Christabel
Frank Adams
Indian Hills
Tiffany
Treasure Island
Far West
Copper Lustre
Anitra
Brunhilde

FREE! If you assume express charges you may have either **Balmung** or **Peachblow** extra. State which is desired and mark on order blank. Select 20 for \$10.00 if you like, doubling the number in each group.

The "Super" Collection Any 10 for \$25.00

Not LESS than 4

Azure Skies
Daybreak
Display
Garden Flame
Gypsy
Mexico
Minnie Colquitt
Misty Gold
Moonlight Madonna
Royal Scot
Spun Gold
Berkeley Gold
Mulberry Rose
Red Valor
Storm King

Not MORE than 6

Ella Callis
Goldbeater
Vice-Regal
Three Oaks
Ola Kala
Pink Reflection
Ranger
Vatican Purple
Sonrisa
Blue Shimmer

If you desire only a part of this collection, select from the column on the left **only** and you may have any 5 for \$10.00.

Novelty Collection 10 for \$40.00

Any five

Alpine Glow
Cloud Castle
Firecracker
Harriet Thoreau
Master Charles
Ranger
Ola Kala
Three Oaks

Any five

Rose Top
Indiana Night
Casa Morena
Franconia
Garden Glory
Katherine Fay
Solid Mahogany
Chantilly



MING YELLOW



MISS CALIFORNIA



MELITZA



LOUVOIS



SABLE



GARDEN MAGIC

"FANCIER'S COLLECTION"

Any 10 for \$7.50

Labeled and Postpaid

- | | |
|----------------|-----------------|
| Alastor | Great Lakes |
| Amigo | Matterhorn |
| Bermuda Sand | Mejitza |
| Damerine | Old Parchment |
| Flora Zenor | Red Gleam |
| Fortune | Sable |
| Florentine | Salar |
| Gallant Leader | The Admiral |
| Garden Magic | The Red Douglas |
| Golden Spike | Ruth Pollock |
| Grand Canyon | The Sentinel |

FREE! If you pay express on the parcel you may select either **Prairie Sunset** or **Tiffanja** additional, without charge.

"ACE COLLECTION"

12 for \$15.00

- | | | | | | |
|-------------|-----------------|-------------|----------------|-------------|-----------------|
| Select
6 | Balmung | Select
3 | Golden Fleece | Select
3 | Action Front |
| | Cameroun | | Majenica | | Berkeley Gold |
| | Elmohr | | Nightingale | | Captain Wells |
| | Golden Eagle | | Rubient | | El Morocco |
| | Melanie | | Tiffanja | | Lady of Shalott |
| | Nightfall | | National White | | Red Valor |
| | Peachblow | | | | Spun Gold |
| | Prairie Sunset | | | | Mulberry Rose |
| | Winter Carnival | | | | Storm King |
| | White City | | | | |

FREE! Any one additional plant from above list if you pay express.



PRAIRIE SUNSET



AMIGO



OLD PARCHMENT



THE ADMIRAL



GRAND CANYON



BALMUNG



TIFFANY

The final touch. Packed in soft, clean, white cottonwood excelsior which absorbs surplus moisture and prevents bruising, the cartons ventilated with air holes, this stack of Iris orders is about to go to the post office and thence to America's gardens. Man in the foreground is C. J. Cooley, who has sealed practically every package leaving here in the past twenty years.



BARGAINS FOR BEGINNERS!

10 for \$3.00

Your Choice, 1 of a Kind

Anitra, sky blue
 California Gold, deep yellow
 Frieda Mohr, huge pink
 Gudrun, giant white
 Indian Hills, vivid purple
 Narain, intense blue
 Jean Cayeux, coffee-tan
 Eros, salmon-pink
 Junaluska, copper and red

Snowking, flaring white
 Copper Lustre, copper-tan
 Tiffany, ruffled plicata
 William Mohr, violet hybrid
 Marquita, ivory and rose
 E. B. Williamson, copper-red
 Destiny, velvety plum
 Orloff, nutmeg and cream
 Radiant, terra cotta and copper



ANITRA



CALIFORNIA GOLD

A sea of Iris bloom, a sight which annually draws a host of visitors during the flowering season in mid-May.



Here is what you get. Plants dug from annually re-set fields of fertile soil exhibit astonishing root development. They are not boosted with fertilizer or irrigation, but grow on naturally after flowering. Started right, tended with care, they cannot help being just right at digging time. These long roots will anchor the rhizomes in the ground and get them off to a quick start in your garden.

ALL 18 for \$5.00 (A \$7.30 Value)

FREE! If you pay the express on the parcel you may have both **Louvois** and **Snoqualmie** free with the \$3.00 collection—12 rhizomes in all. With all 18 for \$5.00 we will include these two and **Wabash** besides—21 altogether.

Be sure to mark in the space provided on the order blank if you wish to take advantage of this offer.

EVERY PLANT CORRECTLY LABELED AND SENT POSTPAID
(Unless express collect for free extras)



GUDRUN



FRIEDA MOHR



FRANK ADAMS



ELSA SASS

TO HELP YOU PLAN AND PLANT FOR COLOR

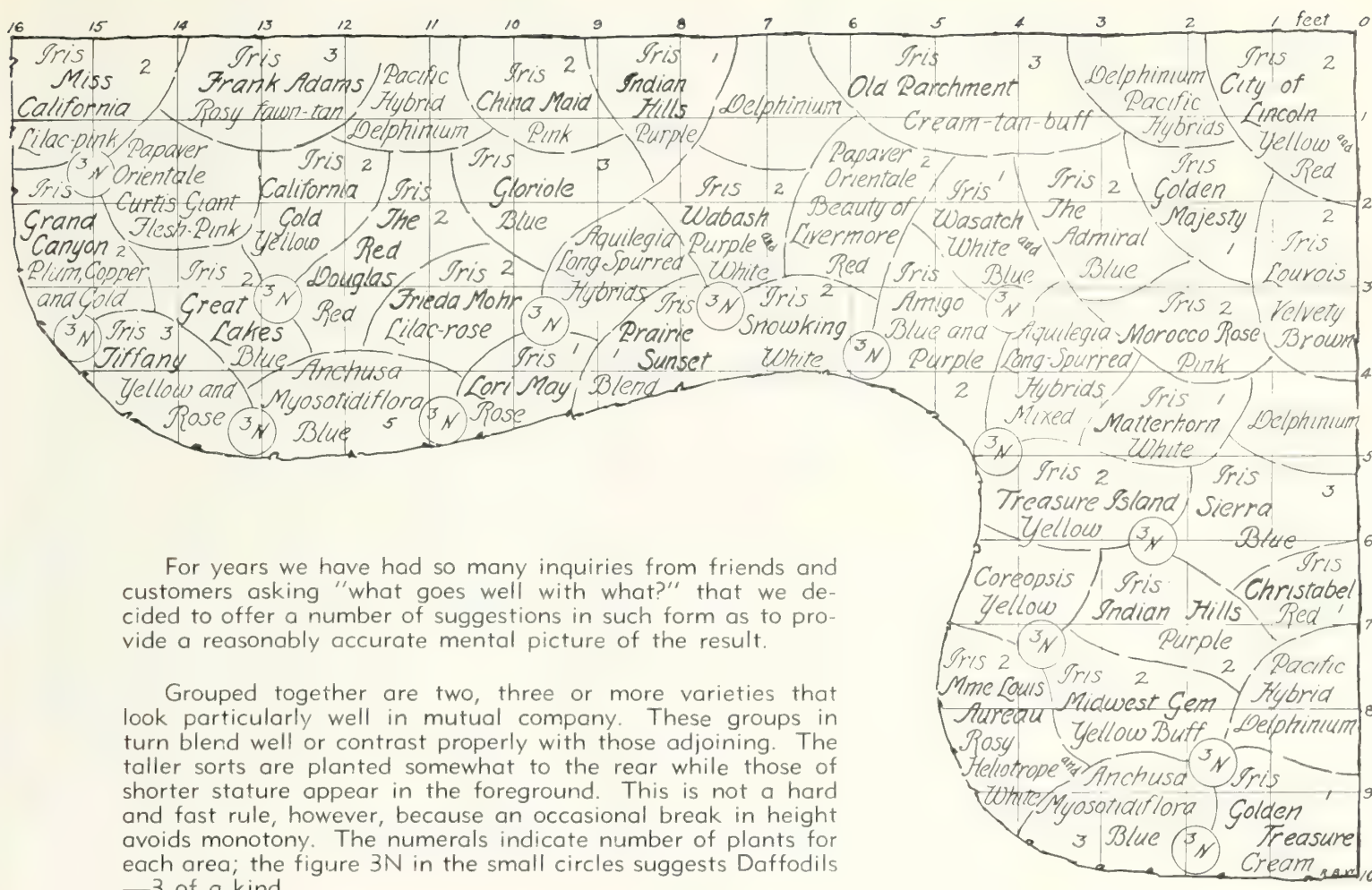
On the opposite page and the two pages following we present graphic plans for Iris borders, or gardens featuring Irises. Varieties suggested in these plans make good companions and the general picture created by any of these borders would be especially pleasing. What is best about them is the fact that they are flexible—you can switch them around to suit yourself!



SNOW FLURRY



MOROCCO ROSE



For years we have had so many inquiries from friends and customers asking "what goes well with what?" that we decided to offer a number of suggestions in such form as to provide a reasonably accurate mental picture of the result.

Grouped together are two, three or more varieties that look particularly well in mutual company. These groups in turn blend well or contrast properly with those adjoining. The taller sorts are planted somewhat to the rear while those of shorter stature appear in the foreground. This is not a hard and fast rule, however, because an occasional break in height avoids monotony. The numerals indicate number of plants for each area; the figure 3N in the small circles suggests Daffodils—3 of a kind.

The border above contains medium or low-priced sorts only; further suggestions in varying price brackets follow on the next two pages.



GOLDEN TREASURE



CITY OF LINCOLN



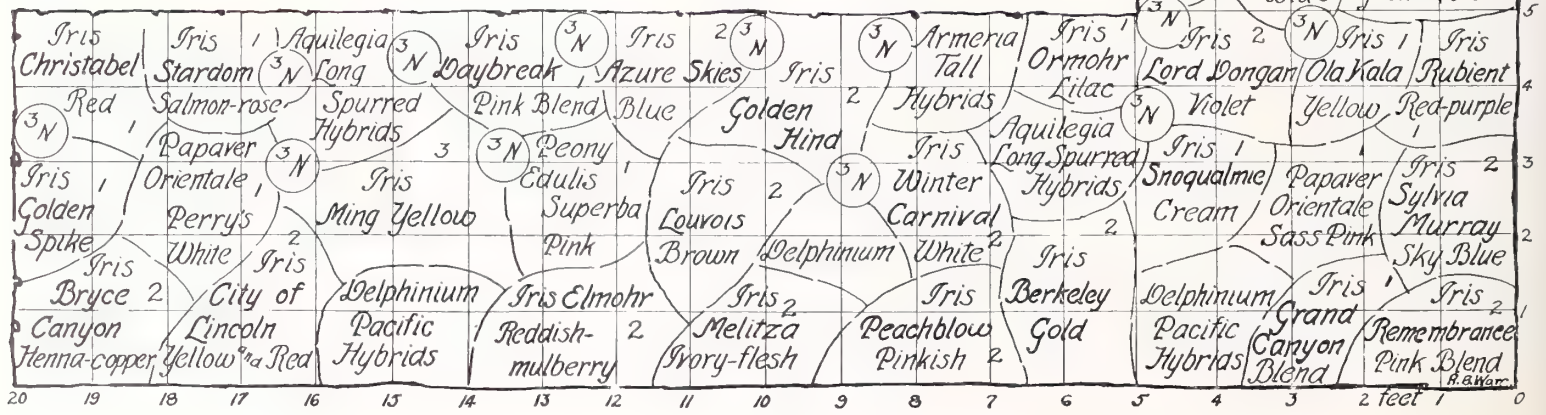
SAN ANTONE



BLUE SHIMMER

FORMAL OR INFORMAL, LONG OR SHORT, NARROW OR WIDE, YOU CAN JUGGLE THESE SUGGESTIONS TO SUIT YOUR SPACE AND YOUR TASTE; ALSO YOUR PURSE.

Note that the plan below is divided into small squares and these represent a total area five feet wide, twenty feet long, and ten feet along one side. If your space is narrower or wider, or there are some groups which do not appeal to you, just prune it to fit or stretch it out by planting a greater number of each kind—or by repeating the combinations or by use of similar color schemes with still different varieties.

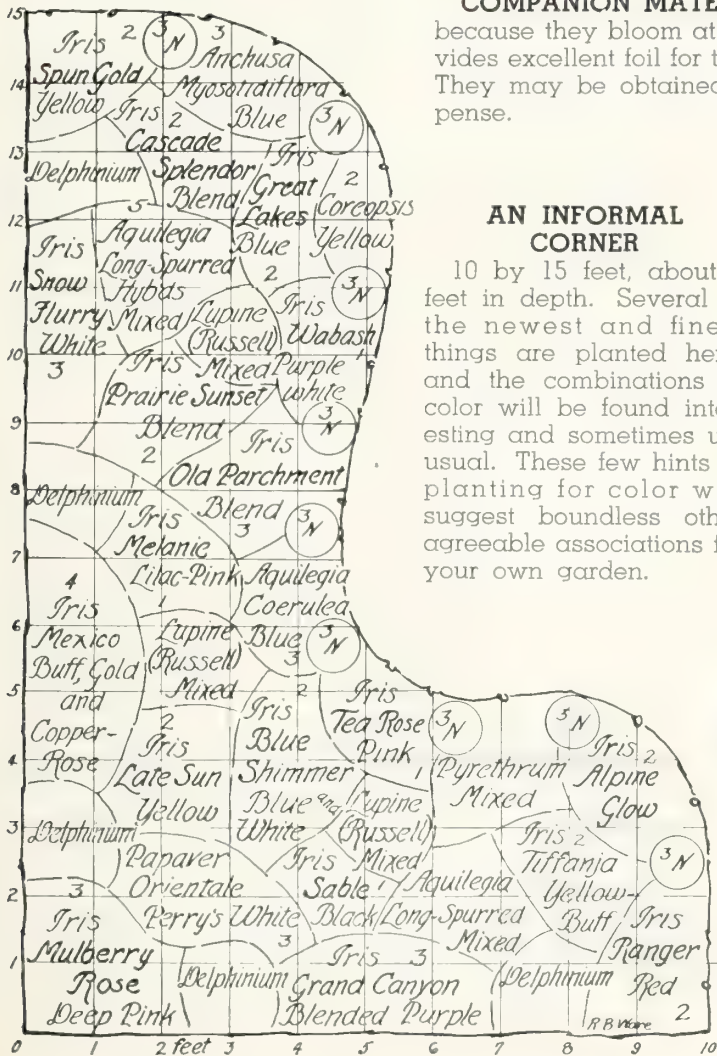




PEACHBLOW



TIFFANJA



COMPANION MATERIAL such as Anchusa, Delphiniums and Poppies, are shown because they bloom at Iris time, or, as in the case of the Delphiniums, the foliage provides excellent foil for the Irises. We do not grow such plants and cannot supply them. They may be obtained from local nurseries generally without difficulty or great expense.

AN INFORMAL CORNER

10 by 15 feet, about 5 feet in depth. Several of the newest and finest things are planted here, and the combinations of color will be found interesting and sometimes unusual. These few hints at planting for color will suggest boundless other agreeable associations for your own garden.



ELMOHR

GOOD NEWS (Kleinsorge, 1946)**Each \$7.50**

Brilliant mustard-gold self. A much ruffled flower with immense wide standards, nicely domed. Falls are exactly the same color, with narrow band of copper shading near the outer edges. A sister seedling of Chamois and Bryce Canyon, not quite as tall as either of these, but about 33 inches in height and a profuse bloomer. Illustrated in color on page 6. HM AIS, 1947.

GRAND CANYON (Kleinsorge, 1941) **Each \$1.00; 3 for \$2.50**

An odd blend of rather deep tones of plum and copper, and gold. Entirely different from any Iris we have ever introduced, it is an Iris to be admired at close range and is especially suited to bringing indoors and associating with oriental rugs. Attractively formed and delicately ruffled. About 40 inches tall, perfectly branched, and it flowers over a very long season. Very large, it is accurately shown in color on page 17. HM AIS, 1943; AM, 1944.

**ROSE SPLENDOR****GREAT LAKES** (Cousins, 1938)**Each \$1.00; 3 for \$2.50**

A clear blue self, produced in Canada by Lyman Cousins, of London, Ontario. A broadly spreading regal type of flower, with handsome foliage and 4-foot stalks, ideally branched. Look at its record: HM AIS, 1939; AM, 1940; Dykes Medal, 1942; No. 1 in the AIS judges symposium for four successive years and among the first ten for seven years! Shown on page 13.

GU DRUN (Dykes, 1931)**Each 35c; 3 for 90c**

Heavily textured enormous white, with petals like those of a Magnolia. A warm or creamy white, with brilliant orange beard and suffusion of gold sprinkling over the entire bloom. Sold very short last year. See page 19.

GYPSY (Kleinsorge, 1944)**Each \$3.00**

Coppery gold standards and falls of solid chestnut-brown, silky rather than velvety. A very late Iris that brings something new into the Variegata field. There is such a contrast in the standards and falls, the latter decidedly rounded and uniformly brown without haft markings, that it commands immediate attention. 4-foot stems, lots of flowers. HM AIS, 1945.

GYPSY BARON (Schreiner, 1942)**Each \$2.00**

Very deep blue-purple Plicata. The flowers are marbled rather than stitched, giving the blossoms a much darker appearance than the usual Plicata type. Big and bold, accurately shown in color on page 33.

GYPSY ROSE (Whiting, 1946)**Each \$15.00**

Rich tapestry-red suffused with a warm glow of copper and a touch of blue in the center of the falls. The blooms are extra large and wide-petaled, with pleasingly rounded form. Very tall and vigorous grower. Few plants.

HAPPY DAYS (Mitchell, 1934)**Each 35c; 3 for 90c**

A giant flower, smooth, light yellow in color. Inclined to lush growth and in severe climates should be afforded some protection, but it amply rewards this extra care. We can now supply it at a figure any gardener can afford.

HARRIET THOREAU (Cook, 1944)**Each \$5.00**

A new and delightful orchid-pink self of individuality and style. Tall and strong stems, the flowers large and of substantial build with color that is clear and bright; petals slightly waved. Height 38 inches. HM AIS, 1945. See color illustration on page 28.

HARVEST MOON (Whiting, 1944)**Each \$3.00**

A luscious apricot blend, the flowers large and rounded, with full, wide petals of extra heavy substance. Almost as fine as Mellow-glow and very much the same color.

HELEN MCGREGOR (Graves, 1946)**Each \$18.00**

Clear pale blue, pure and uniform in color, the sensation of the Iris world the year of its introduction. Of perfect form, flaring and daintily ruffled, very large, beautifully spaced on nice stems, it is not only supreme as a light blue but ranks as one of the best of all new Irises. HM AIS, 1946.

ICY BLUE (Weed, 1940)**Each 75c; 3 for \$2.00**

The lightest blue self in the list. Beautifully formed, amply branched and the stems reach four feet. Almost white, the color is clearly defined as lightest delicate blue with orange beard. HM AIS, 1941.

IDANHA (Kleinsorge, 1942)**Each \$1.25**

This is a tall, pronounced bicolor with apricot-yellow standards and pinky falls. A profuse bloomer on stalks that reach four feet, widely and abundantly branched, making it ideal for garden effect—a pink-and-tan picture. Large blooms, lasting over a long period.

ILLINOIS SUNSHINE (Faught, 1946)**Each \$10.00**

A new yellow of great size, deep in general tone but the falls have a slightly lighter central area. Beard is deep yellow. Very tall, widely branched and has increased astonishingly in our garden.

INDIAN HILLS (Grant, 1937)**Each 40c; 3 for \$1.00**

Rich true purple, more red than blue, with a silky sheen about it that gives it exceptional brilliance. Very large oval-shaped blossoms, a rampant grower and one of the most effective as a garden mass—gloriously vivid.

INDIANA NIGHT (Cook, 1942)**Each \$6.00**

Lustrous, deepest, richest velvety purple, almost black. The finest and most satisfying dark Iris of a long series of seedlings from the famous Sable. 38-inch stems, well branched, with every good quality desired in an Iris. Midseason and long lasting. HM AIS, 1942; AM, 1944.

INNOVATION (Hall, 1945)**Each \$5.00**

A rose-trimmed Plicata, brighter and more colorful than other pinkish Plicatas. It carries a lot of color—a pink Firecracker, as it were—with three-foot stems and good branches. Hardy and increases fast. HM AIS, 1947.

INSPIRATION (Stevens, 1937)**Each \$2.00**

Brilliant cerise-rose, huge and imposing. This is the only Iris we have in this color—something entirely different and it happens to have all good points. Practically a self, with slightly brownish warm cast on the haft.

JAKE (Long-Sass, 1943)**Each 75c: 3 for \$2.00**

A white white, with no other color in it except a trace of pale yellow near the center. Large flowers, well formed, free blooming and an easy grower. Stands right up alongside many more expensive new whites.

JASPER AGATE (Williams, 1943)**Each \$6.00**

Distinct new shade of copper-gold-red, with an underlying copper-pink tone throughout the entire flower. Hard to describe, it is really a new color to the Iris spectrum, with smooth velvety finish and no veining; a true self. HM AIS, 1944.

JEAN CAYEUX (Cayeux, 1931)**Each 35c: 3 for 90c**

A smooth, soft, light buff, described by some as "coffee colored." The stems are tall and well branched and the large flowers are slightly wavy. A very distinct Iris.

JUNALUSKA (Kirk, 1934)**Each 40c: 3 for \$1.00**

Copper-red falls and copper-gold standards—a magnificent Iris with a coppery red garden effect. An early bloomer, very tall and well branched. Always admired and one of the "best sellers" in this catalog. Runner-up for the Dykes Medal in 1938. HM AIS, 1936; AM, 1937.

KATHERINE FAY (Fay, 1945)**Each \$7.50**

A grand white, large, tall and with semi-flaring ruffled blooms. All white, with no yellow in the center. It is an easy grower and rapid multiplier, 100% hardy. HM AIS, 1945; AM, 1947.

LADY BOSCAWEN (Graves, 1946)**Each \$12.50**

Alabaster-white; perfection in color and form. In the originator's garden it grew to four feet in height with magnificent branching. Slightly ruffled, it bears some resemblance to Helen McGregor in form. Beard is light yellow and does not contrast with the pure white effect.

**LADY MOHR****NIGHTINGALE****VICE REGAL**



SOLID MAHOGANY



MINNIE COLQUITT

LADY MOHR (Salbach, 1944) **Each \$10.00**

A new and altogether different addition to the interesting Wm. Mohr family of Iris, this one brings a color combination previously unknown in the tall bearded group. Standards are oyster-white, huge and slightly fluted, with strong midribs. Falls are pale char- treuse or greenish yellow, with prominent veining. There is a very prominent dark patch surrounding the beard. Lady Mohr was the center of interest in our garden last season, where some of the stalks reached four feet in height and carried several open blooms at one time. HM AIS, 1944; AM, 1946. See page 25.

LADY OF SHALOTT (Schreiner, 1942) **Each \$2.50**

Precisely formed and lacily frilled, a charming and delicately colored pink Plicata. Standards are heavily flushed rose-pink and the falls are edged with a peppering of minute pinkish dots. 34 inches tall.

LAKE BREEZE (Fay, 1945) **Each \$8.00**

A seedling of Gloriele, with much of its charm and frosty pale blue tone. Lake Breeze is heavily ruffled, the falls flaring and wide with no haft markings. A bit deeper in color than Gloriele, slightly larger, the stems carrying nine to eleven flowers. Three feet tall. HM AIS, 1945.

LAKE SHANNON (DeForest, 1945) **Each \$10.00**

A mighty close approach to bright indigo-blue. There are many fine new blue Irises coming into commerce but this is the bluest one we have seen. Practically a self, with fluted standards and falls. An odd feature about this Iris is the deeper veins running the length and breadth of the falls. Beard uniformly blue, shading to orange within the flower. 36 inches, well branched. HM AIS, 1946.

LAMPLIGHT (Schreiner, 1944) **Each \$5.00**

A tranquil blend of flesh, buff and copper, with lamplight glow. Lighter in tone than what is generally referred to as salmon, and deeper than apricot. Well substantiated, a smoothly blended self.

LATE SUN (DeForest, 1940) **Each \$1.00; 3 for \$2.50**

A big bold solid yellow which has received high praise in all parts of the country. Flowers measure 6 inches, petals are thick and heavy, and of a uniform deep yellow color. Strong growing, with tall stalks and rampant foliage. Perfectly hardy, about 40 inches tall. HM AIS, 1942.

LIGHTHOUSE (Salbach, 1936) **Each 75c; 3 for \$2.00**

This bright rose blend is one of the most sought after Iris we grow. Standards are a blend of rose and yellow; falls coppery old rose, with a very bright beard and glowing center. Perfectly hardy, rapid increaser; an Iris that is certain to add life to your planting. HM AIS, 1937; AM, 1940.

LIGHTS ON (Lapham, 1946) **Each \$10.00**

A new claimant for the title of reddest Iris. It is more of a self than Red Gleam, with even less of the brown in its makeup. Well shaped, with solid unveined hafts, velvety falls and vivid color. 30 to 36 inches in height. HM AIS, 1946.

LORD DONGAN (Smith, 1940) **Each \$3.00**

A stunning creation with broad standards of Chinese violet and extra velvety falls of deepest Pansy-violet, set off with a very thick, intense, pale yellow beard. HM AIS, 1940.

LORI MAY (DeForest, 1941) **Each \$1.50**

Harmonious Daphne-pink; a genuine find in the popular pink class. This Iris has very thick petals, excellent flaring form, and is especially fine as a clump. Good sized blooms, very close to true pink. HM AIS, 1944.

LOS ANGELES (Mohr-Mitchell, 1927) **Each 40c; 3 for \$1.00**

A beautiful white and blue Plicata which ranks, despite the many years it has been in commerce, with the best Iris of the present day. Almost entirely white, the blue stitching appears near the haft. Blue style arms and a golden beard give it great distinction. AM AIS, 1944.

LOTHARIO (Schreiner, 1942) **Each \$5.00**

An Amigo-type Amoena; very rich and velvety, much taller than the famous Amigo and with flowers of great size. Contrast in color is not as sharply defined as in the case of its predecessor but it is a magnificent Iris. Stock is extremely scarce. HM AIS, 1945. See page 27.

LOUISE BLAKE (Smith, 1943) **Each \$7.50**

Of the Amigo type, with pale sky-blue standards and velvety blue-purple falls edged sky-blue. Lighter in color than Amigo, other- wise quite similar. HM AIS, 1944; AM, 1947.



LOTHARIO

MATTERHORN (J. Sass, 1938) **Each \$1.00; 3 for \$2.50**

Pure white; large but delicate in appearance. Even the beard is white. Three feet in height, with slender, well branched stems and many flowers widely spaced. Unmatched for purity of color and will please anyone who is looking for the best white at a reasonable price. HM AIS, 1938; AM, 1940.

MATULA (H. Sass, 1939) **Each 50c; 3 for \$1.25**

Beautiful blend of brilliant rose, rich orange, crimson and buff. A clump provides a colorful golden salmon effect. The flowers are very large, with falls that are waved and crimped, as are those of Midwest Gem. This makes a mighty handsome pair. HM AIS, 1939.

MELANIE (Hill, 1941) **Each \$1.25**

This splendid new light pink comes to us as the finest introduction of H. M. Hill, of LaFontaine, Kansas. Color is orchid-pink, close to true-pink, and there are as many as five open flowers at once on the 40-inch stalks. HM AIS, 1941.

LOUVOIS (Cayeux, 1936) **Each 75c; 3 for \$2.00**

Brown, deep, rich and velvety, like the lustrous fur of an animal. Breeders are still trying to attain an Iris that will be an improvement on this distinct French creation. Done in two shades of chocolate, it is well illustrated on page 15. Big flowers, medium height. HM AIS, 1939.

LULLABY (Hall, 1943) **Each \$3.00**

Apple-blossom to orchid-pink, a luscious color in a large oval flower. Standards and falls are nearly the same shade, the latter without haft markings. Very tall and well branched. Stock very limited.

LYNN LANGFORD (Hall, 1946) **Each \$12.00**

Orchid-pink in a deep tint, with golden yellow center. There is no veining to detract from the general orchid coloring except that the beard is golden yellow. Flowers are large, very flaring in form, produced on stout 3-foot stems. HM AIS, 1946.

MAJENICA (Cook, 1941) **Each \$2.00**

Distinct new pinkish blend with a tinge of salmon. This is a pleasing flower in every way with wide-petaled standards and falls; full, rounded and huge in size. Less pink and more orange than Eros, but a somewhat similar color effect. Height 3 feet. HM AIS, 1943. See page 30.

MARQUITA (Cayeux, 1931) **Each 40c; 3 for \$1.00**

A well named Iris in brilliant ivory-yellow, with ochraceous maroon veinings on the falls. Glorious ivory standards, deepening to sulphur at the base. Falls same color, but entirely lined maroon. Never enough stock to go around. AM AIS, 1936.

MARY E. NICHOLLS (Nicholls, 1939) **Each 75c; 3 for \$2.00**

Has the creamy smooth heavy finish of white kid leather, with dull green-gold overlay at the haft. Beautiful form, medium in size, a prolific bloomer and fast increaser. One of the most popular white varieties, unique and beautiful. HM AIS, 1940; AM, 1943.

MASTER CHARLES (Williamson, 1943) **Each \$5.00**

Rich and glowing mulberry-purple, with definite charm and flare to the form. Standards are true purple, with blackish sheen blending to brown at the base. Falls the same color blended brown at the haft. Beard mulberry-purple tipped brown. Brilliant and distinctive, it is undoubtedly one of the finest of Longfield introductions. HM AIS, 1944; AM, 1946.



OLA KALA—No. 1 in the 100 Best!

MELITZA (Nesmith, 1940) **Each \$1.00; 3 for \$2.50**

Pale ivory-flesh, particularly effective in dull weather. Much of the unusual color effect of this Iris is derived from the fiery tangerine-orange beard. No Iris that we have ever grown has increased so rapidly and it is at its best on a two-year clump. Height 36 to 40 inches. Shown in color on page 15. HM AIS, 1940; AM, 1942.

MELODIST (DeForest, 1946) **Each \$10.00**

A henna colored blend on gold ground. The salmon and rose tones of Salar blended with the golden brown of Tobacco Road, its parents. 38 inches. HM AIS, 1947.

MELLOWGLOW (Whiting, 1942) **Each \$10.00**

Deep peach or apricot, with a flush of pink. A highly ruffled and perfectly formed Iris, with very broad and rounded standards and falls. The beard is extra heavy and extends far down the fall. Mrs. Whiting's most noteworthy introduction among many excellent ones, and stock is very scarce. HM AIS, 1942.

MEXICO (Kleinsorge, 1943) **Each \$3.00**

Gay and brilliant, a blended bicolor of buff golden standards and broad plushlike falls of glowing red-brown, bordered and blended golden buff. A perfectly gigantic flower, with the falls slightly crinkled and waved at the edges. A blend rather than a Variegata. Very late. HM AIS, 1944. Stock limited. See page 29.

MIDWEST GEM (H. Sass, 1937) **Each 50c; 3 for \$1.25**

Bright golden apricot, more buff than yellow, with a faint cast of pink over the falls. Immense in stalk and flower, it is particularly attractive because of the odd crimped petals. HM AIS, 1937.

MING YELLOW (Glutzbeck, 1938) **Each 75c; 3 for \$2.00**

A yellow without a fault; clear, rich, smooth without venation, big and slightly waved. Lighter in tone than Golden Majesty and much earlier. Wide petals, very bright yellow beard. HM AIS, 1938; AM, 1941. Shown in color on page 14.



HARRIET THOREAU

MINNIE COLQUITT (H. Sass, 1942) **Each \$3.00**

Massive white Plicata, entirely different from all others. It has a broad band of wine-purple stitching at the edges of the enormous flaring falls, and this same color is repeated in the standards. The whole flower is slightly ruffled. A thoroughly fine Iris in every way, and a husky grower. HM AIS, 1943; AM, 1945. See page 26.

MISS CALIFORNIA (Salbach, 1936) **Each 50c; 3 for \$1.25**

Gigantic lilac-pink; one of the most satisfactory varieties we have ever grown. It makes great fans of purple-tinged foliage, produces a wealth of 4-foot stalks of great pink-toned blooms that last over a very long period. Does equally well in all parts of the country. HM AIS, 1938. See page 15.

MISSOURI (Grinter, 1933) **Each 50c; 3 for \$1.25**

A famous clear blue that won the Dykes Medal in 1937. Color is especially fine when afforded light shade from the afternoon sun. Sells out every year.

MISTY GOLD (Schreiner, 1943) **Each \$3.00**

A lovely gold-spangled, lemon-colored Iris, lemon toned and gold braided. Petals are ruffled and fluted, lacy and brilliant. Three feet tall; slender, well branched stems. An unusual and beautiful flower. HM AIS, 1945. See page 35.

MME. LOUIS AUREAU (Cayeux, 1934) **Each 50c**

This heavily dotted and sanded Plicata from France has a ground color of silvery white, closely netted with rosy heliotrope. Very large, very early, medium height. AM AIS, 1939.

MOHRSON (White, 1935) **Each 50c; 3 for \$1.25**

Deep violet colored seedling of Wm. Mohr, with darker veins and rich bronzy gold beard. A spectacular flower, one of the very largest, with ruffled and crinkled blossoms.

MOLLY MAY (DeForest, 1944) **Each \$2.00**

Large cream-pink blend with falls slightly deeper than the standards, and still deeper coloring at the haft. Orange beard and yellow style arms. Standards are perfectly huge, firmly held upright and closed at the top. Height 3 feet.

MONADNOCK (Salbach, 1937) **Each \$1.00; 3 for \$2.50**

Very brilliant pinkish rose, a large flower that blooms very late in the season. We have no other Iris in this shade—a deep but very bright tone of rose with golden beard. Husky stems reach four feet, well branched.



WINTER CARNIVAL

MOONLIGHT MADONNA (J. Sass, 1943) **Each \$3.00**

Of the same shade of lemon-ice as Elsa Sass, with larger flowers and flaring form. Self colored, it is the lemon-toned Iris we have been looking for. Tall and sturdy, a rapid increaser. HM AIS, 1943; AM, 1945.

MOROCCO ROSE (Loomis, 1937) **Each 75c; 3 for \$2.00**

A very large rose-pink self with soft yellow glow at the heart and brownish cast about the haft. Still ranks among the best pinks and pleases all who buy it. Unlike many Iris in this color class, Morocco Rose is a truly big flower. Always in heavy demand. See page 20.

MOUNT HERMON (Lowry, 1945) **Each \$3.00**

This new cool white from New England has very little of the cream or ivory tone in its makeup. Tall growing, up to 42 inches, it makes a regal display in the garden because of the wide branching and general excellence of the big, well shaped blossoms. Pale lemon beard. HM AIS, 1945.

MT. WASHINGTON (Essig, 1937) **Each 75c; 3 for \$2.00**

A giant white with the form of Shining Waters. Very tall, wide at the hafts and broadly flaring, it ranks with the leaders among the new whites. Heavy gold beard. HM AIS, 1939; AM, 1940.

MULBERRY ROSE (Schreiner, 1941) **Each \$2.50**

Aptly described by the name, this new Iris is actually something new and different in coloring. Very tall stems hold the self colored blooms well aloft, and the branching is good. Most unusual in color, it might be termed a deep pinkish mulberry, strongly shaded brown. The heavy bronze beard is an added asset. HM AIS, 1943; AM, 1944. Shown on page 33.

NARAIN (Shuber, 1936) **Each 35c; 3 for 90c**

A silky intense indigo-blue, with blue beard on a cream throat, but without veining. Rather early, the foliage broad and immense in stature, the flowers large. A wonderful Iris for blue garden effect.

NATIONAL WHITE (Weed, 1944) **Each \$2.00**

A spectacular pure white Iris that is a giant in every way. The huge flowers have extra broad falls, well shaped, and the widely branched stalks reach over four feet in height. One of the very best new whites and it will make a good run for largest bloom in any show.

OLA KALA (J. Sass, 1943) **Each \$4.00**

Just now we have an abundance of fine deep yellow Irises, but here is one that perhaps outdoes all the others for depth of color and in addition it is heavily ruffled. Medium large flowers on nicely branched 36-inch stalks. So yellow it is almost on the orange side. HM AIS, 1943; AM, 1945. Tied for Dykes Medal, 1946. See page 27. No. 1 in 100 best this year!

OLD PARCHMENT (Kleinsorge, 1939) **Each \$1.00; 3 for \$2.50**

Light creamy tan, with golden buff overlay; a most unusual color break and a distinctly beautiful new Iris. Standards are domed and closed; falls wide and rather tailored in appearance. A perfectly huge bloom, heavy in substance, and the longest lasting variety in our garden. HM AIS, 1940; AM, 1941. See page 17.

ORANGEMAN (Waters, 1946) **Each \$7.50**

A lovely huge orange self with a touch of deeper orange at the haft. The flower has a wonderfully smooth, well groomed look; the coloring is even and rich. The tall stems, 40 inches high, are very well branched. An outstanding Iris in a much sought after color. HM AIS, 1947.



RANGER



MEXICO

NIGHTFALL (Hall, 1942) **Each \$1.50**

The falls are very velvety rich dark Pansy-purple with almost no veining on the haft. Standards are several shades lighter than the falls, making a very striking color combination. Plushlike substance with a glistening sheen. 36 inches; well branched. HM AIS, 1941; AM, 1945.

NIGHTINGALE (Hall, 1942) **Each \$2.00**

The coloring of this Iris is really new, a glistening golden russet. Surely a glorious and pleasing color, and the flowers are of large size and on good stout stems. Both standards and falls are identical in tone and even the beard is in harmony. Height 3 feet. HM AIS, 1944. Illustrated in color on page 25.

NYLON (Whiting, 1940) **Each 75c; 3 for \$2.00**

Coppery tan self with heavy gold beard. One of our largest Irises and the stalks are heavy and well branched. This is an Iris you will like and one that the judges seem to have overlooked.

OREGON TRAIL (Kleinsorge, 1943) **Each \$2.50**

A big, heavy textured flower in smoothly blended shades of tawny salmon, a rich gold beard and odd soft brown areas surmounting the broad falls. For sheer individuality it ranks along with Old Parchment, Tobacco Road and Aztec Copper. About three feet high, with heavy stems and large flowers; very late.

ORLOFF (H. Sass, 1937) **Each 50c; 3 for \$1.25**

A peach and cinnamon Plicata of good size and most unusual coloring, being a sort of cinnamon-brown in effect. The ground color is deep cream, heavily dotted and edged red-brown. Heavy bloomer, medium height. HM AIS, 1937.

ORMOHR (Kleinsorge, 1937) **Each 50c; 3 for \$1.25**

One of the largest Irises in existence, and especially noteworthy because it is a seedling of Wm. Mohr. It reaches 40 inches in height, with several great blooms on well branched stalks. The color is pale lilac with a silvery cast, veined violet. Darker when first opening and in dull weather. HM AIS, 1939; AM, 1940.

OVERTURE (Hall, 1944) **Each \$8.00**

This is the first of the new "flamingo" pinks we have offered. A luscious shade of pure pink, of medium size, on tall and well branched stems. The bright red-orange beard gives it lots of zip. Increases very fast and will make a clump of pink that you didn't think could be possible in Iris!



MAJENICA



RED VALOR

OZONE (J. Sass, 1935) **Each 50c**

A peculiar and subtle shade of rosy lavender, the same in standards and falls, with a pronounced copper shoulder on each fall. Large and of ideal shape. A fine grower. HM AIS, 1936; AM, 1938.

PAINTED DESERT (Milliken, 1943) **Each \$5.00**

Gorgeous colorings of the Arizona desert blended into a stately Iris reaching four feet in height. A soft buffy tan, with brownish suffusion at the haft and violet midribs in the standards. A light violet patch at the end of the beard adds a contrasting touch.

PATRICE (DeForest, 1945) **Each \$5.00**

New white Plicata which we like very much and which we regard as different from the many others listed. Standards light cream flushed pale rosy lavender; falls sparkling white brushed bright gold across the haft which is speckled rose-brown. Refined, clean and very brilliant. Tall and large, with all good points. HM AIS, 1946.

PEACHBLOW (H. Sass, 1943) **Each \$1.50**

A pinkish Plicata with yellow ground, illustrated perfectly in color plate. This Iris has the remarkable faculty of "carrying power" and its pinkness accents any spot where it is planted. Oval-shaped blooms on tall stems, nicely branched. Rapid increaser. See color plate on page 23.

PEACH GLOW (Kleinsorge, 1943) **Each \$3.00**

Tall, wiry stems bear many medium sized flowers of peach-pink color which last over a very long season. Makes a very pink clump, where it is at its best. Not impressive the first season as a single stalk. See color illustration on page 32.

PINK CAMEO (Fay, 1946) **Each \$15.00**

One of the new series of "flamingo" pinks—a true pink devoid of violet influence—the kind of pink Iris we have all been wishing to see. Color is described as pale cameo-pink, a self, with a startling tangerine beard, like a tongue of flame on the hafts. An Iris of good size, three feet in height. HM AIS, 1946.

PINK REFLECTION (Cook, 1942) **Each \$4.00**

Chamois-skin-pink self, a peculiar and enchanting shade unlike anything else. There seems to be a fleeting buff undertone. A crisp and clean cut flower, flaring in form, with very heavy texture. The beard is lemon. Height 3 feet; very late. HM AIS, 1942; AM, 1944.

PINK RUFFLES (Smith, 1940) **Each \$1.00; 3 for \$2.50**

Solidly colored lilac-pink that might be classed as an intermediate because of its low growth—about 24 to 28 inches. The flowers are self colored and heavily fluted and ruffled, produced in great number. HM AIS, 1940; AM, 1942.

POT O' GOLD (Grant, 1941) **Each \$2.50**

The most brilliant intense yellow Iris we grow. About the size of Golden Hind and much like it in form and size, but even deeper and richer in color. Some of our visitors select it over all other yellows. Medium size, three feet tall.

PRAIRIE SUNSET (H. Sass, 1939) **Each \$1.50; 3 for \$4.00**

All that has been said about this gorgeous Sass creation is true, but it simply has to be seen to be realized. The blendings of peach, apricot, rose, copper and gold are so well done that one is at a loss to describe it adequately. The picture on page 16 is fairly accurate, however, and leaves but little to the imagination. A fine big flower that will give you a thrill every time you look at it. HM AIS, 1937; AM, 1941. Dykes Medal, 1943.

PREMIER PEACH (Hall, 1946) **Each \$12.00**

From the new "flamingo" pink series, but less pink and more the color of peach ice cream—a smooth, soft and very delicate shade. This has the typical tangerine-red beard. Good size and form, just under 36 inches in height. HM AIS, 1946.

PRINCE OF ORANGE (Kleinsorge, 1940) **Each 75c; 3 for \$2.00**

A seedling of Far West and Naranja. Solid golden orange, one of the richest things in the garden picture. Flowers of medium size, very flaring in form, widely spaced along the branching stems. HM AIS, 1942; AM, 1944.

RADIANT (Salbach, 1936) **Each 50c; 3 for \$1.25**

Standards of burnished golden bronze; falls glowing copper-red; one of the most strikingly brilliant Iris obtainable. Of better than average size, well branched. Produces an immense quantity of bloom and increases rapidly. HM AIS, 1938.

RAJAH BROOKE (Norton, 1945) **Each \$6.00**

Rich topaz-yellow standards shot with bronze; the falls deep pigeon-blood-red. Haft is solidly colored, clear into the throat, giving the flower an extra rich effect. Not brilliant and garish, Rajah Brooke is an Iris in luxurious, subdued hues remindful of an Oriental rug. HM AIS, 1946.

RANGER (Kleinsorge, 1943) **Each \$4.00**

Dark but very bright almost true crimson-red. A decided self, with long, cone-shaped, closed standards and wide falls of glossy velvet. Bronze-orange beard on a brownish toned haft, with very little venation. One of the last to bloom, a sure producer of flowers and lots of them, with straight stems and fine branching. Very large, 36 inches tall. HM AIS, 1944; AM, 1946. Shown on page 29.

RED GLEAM (Lapham, 1939) **Each \$1.00; 3 for \$2.50**

Here is the red Iris that actually looks red and has been declared the nearest approach to scarlet thus far obtained in this flower. It is of good size, of beautiful semi-flaring form, three feet in height and a free bloomer. Texture is velvety but excitingly brilliant. HM AIS, 1940; AM, 1941.

RED VALOR (Nicholls, 1939) **Each \$2.50**

A superb big red that has been gaining popularity each season. A garnet-red self with brown beard. It won the Roman Gold Medal in 1940, the HM of the AIS in 1941, and the AM in 1943. Because it is absolutely hardy and has given satisfaction everywhere, it is in great demand and stock remains scarce. Shown on page 30.

REDWARD (Cook, 1942) **Each \$5.00**

Deepest crimson-red—an approach to red from the purple side without the orange or brown influence as in the case of the three varieties listed just above. A large and brilliant Iris with widely flaring velvety falls. HM AIS, 1945.

REMEMBRANCE (Hall, 1942) **Each \$3.00**

Of a bewildering number of pink blends raised by David Hall, this appears to be the best. Although the predominant note is a delightful shade of light pink, there is enough yellow in the big flowers to class it as a blend. Well shaped, with very strong stems, it is 38 inches tall. Limited stock. HM AIS, 1943; AM, 1944.

ROCKET (Whiting, 1945) **Each \$20.00**

Here is an Iris the name of which is truly indicative of its rise to fame. An orange self, the standards pure deep chrome and the falls orange-chrome almost to the edge. There is a burnished finish on the falls which lends extra depth to the color. Ideal form, nice branching and grows to three feet. HM AIS, 1945; AM, 1947.

ROSARIO (Thole, 1939) **Each 50c; 3 for \$1.25**

Beautiful ochraceous yellow, flushed and overlaid old rose. Might be called tourmaline-pink with gold suffusions extending from heart of flower into the falls. Deep yellow beard. Form is broadly flaring, very large in size; 40 inches tall.

ROSE SPLENDOR (Kleinsorge, 1947) **Each \$15.00**

The picture on page 24 is a very close likeness, although the Iris is actually more pink than this would indicate. When fully opened it is very pink indeed, a luscious color remindful of a ripe Watermelon except for the slight coppery tints. About three feet in height, a strong grower, well branched. Unlike any other near pinks in this catalog.

ROSE TOP (H. Sass, 1941) **Each \$6.00**

This bright rose-pink Plicata provided the greatest surprise of our 1945 season. Blooming after every other Iris had passed, not many visitors saw it. Highly ruffled, the big blossoms of deep cream have a heavy pattern of vivid rose-pink stitching which seems to possess exceptional carrying quality. Viewed a block distant it looked like a red and white bicolor. HM AIS, 1943.

ROYAL SCOT (Hall, 1944) **Each \$3.00**

A tall and large flowered red trimmed Plicata of a pleasing tone of burgundy-red. It is so heavily trimmed that at a distance it gives a red effect. Form, substance and stem are good, and it increases fast and blooms freely. HM AIS, 1944.

RUBIENT (Whiting, 1942) **Each \$2.00**

A taller, much redder, Amigo. Standards are rich Pansy-purple, very brilliant; the falls blackish red-purple with a neat edge the same tone as the standards. Stems reached a height of over 40 inches in our garden. Note the picture at right, above.

RUTH POLLOCK (H. Sass, 1939) **Each \$1.00**

One of the most beautiful and most popular of all the Sass Plicatas. A smooth, light yellow very heavily patterned and peppered reddish purple. The flower is near perfection in all details, very low branched, a heavy bloomer. HM AIS, 1939; AM, 1941.

SABLE (Cook, 1938) **Each \$1.00; 3 for \$2.50**

Almost black; a uniform shade of deepest blue-black-violet, with blue beard. Sable has every attribute that a fine Iris should possess; large size, reasonably tall stalks, thick substance and a wonderfully lustrous sheen. Everybody wants Sable. HM AIS, 1937; AM, 1940. See page 15.

SALAMONIE (Cook, 1946) **Each \$12.50**

Exquisite light pink blend, richly yet delicately colored, combining the best features of its parents, Majenica and Pink Reflection. A self in garden effect, the flowers holding their color well in any weather. Standards light pinkish cinnamon; falls light Congo-pink; flowers 5 inches in diameter. A strong grower and free bloomer. HM AIS, 1946.

SALAR (DeForest, 1940) **Each \$1.00; 3 for \$2.50**

Creamy flesh entirely dominated by an overlay of salmon. A difficult Iris to describe but the color effect is that of salmon. As large as Happy Days and about the same form. Height over 3 feet. HM AIS, 1941.

SAN ANTONE (Kleinsorge, 1947) **Each \$15.00**

Illustrated on page 22. A deep tan or sand-brown self, imposing in size and manner of growth, with extra broad falls and beautiful form. The immense buds unfold into huge flowers perfectly spaced, many to the stem. Just enough ruffling to lend grace. Sold short last year; few plants.



RUBIENT



BRIGHT LIGHTS



BATAAN



FORTUNE

SHAH JEHAN (Neel, 1932) **Each 35c; 3 for 90c**

Standards are creamy buff faintly edged lavender, the falls very rich velvety chestnut merging into purple, thence gradually fading out to a margin that repeats the color in the standards. Beard is rich orange. An oriental blend.

SHARKSKIN (Douglas, 1942) **Each \$4.50**

A silky white Iris of near perfection in all details. Chosen by some judges as the very finest white of all, it has large size, heavy texture and purity of color to commend it. Inside the throat there is a glistening yellow flush. 44 inches tall. HM AIS, 1943; AM, 1946.

SHARON KAY (DeForest, 1946) **Each \$10.00**

An extraordinary "pinky" Iris of great size and delectable soft coloring, most unusual in the oval shape of the great flowers and in their bright orchid-like shade. Style arms are white tinted lilac and the beard is white tipped orange inside the throat. Magnificent as a clump. Height 38 inches.

SHINING WATERS (Essig, 1933) **Each 40c; 3 for \$1.00**

Clear and clean blue, like the reflection of an azure sky in crystal waters. Imposing flower and plant, 4 feet tall. A bit tender in severe climates. Few plants.

SHISHALDIN (DeForest, 1944) **Each \$2.00**

A lusty growing blended self of orange, yellow and brown. Flaring in form, very bright and colorful; one of the new things which looked very good in New England gardens during the 1946 American Iris Society meeting.

SHOW GIRL (Nelson, 1945) **Each \$4.50**

A blush-rose blend from Rameses crossed with Prairie Sunset. Standards and falls the same shade of rose-pink but the heavy beard and haft are intense orange. Tall and floriferous.

SIEGFRIED (H. Sass, 1936) **Each 50c; 3 for \$1.25**

Pale sulphur-yellow, etched with stippling of purple-brown threads. A very popular yellow Plicata that is both large and tall. HM AIS, 1936; AM, 1938.

SIERRA BLUE (Essig, 1932) **Each 35c; 3 for 90c**

A soft, clean, enamel-like blue. It is of tall and stately habit, sometimes reaching over 5 feet, with many buds to the stalk. Deeper in tone than Shining Waters and more hardy. In 1935 it won the Dykes Medal and is a consistent flower show winner.

SIERRA SNOW (Kleinsorge, 1939) **Each \$1.00**

A hardy white of pure, clean color; very attractive spreading form, and with wavy edges on the falls. Over 40 inches tall, widely branched. Very scarce.

SNOQUALMIE (Brehm, 1938) **Each 75c; 3 for \$2.00**

A solid deep cream; even in tone, large in size and of leathery texture. Creamy Irises tie into the garden picture well and are admirably used with the reds and Variegatas as well as with the blues and purples. This is one of the best, hardy and free blooming.



PEACH GLOW



THREE SISTERS



GYPSY BARON

SNOW FLURRY (Rees, 1939) **Each \$1.50; 3 for \$4.00**

Standards pure icy white, beautifully ruffled. Falls big, broad and pure white. They are waved and crimped at the edges, semi-flaring and abundantly produced on stems reaching 4 feet. Early and long lasting. Note the color plates on pages 13 and 21.

SNOWKING (H. Sass, 1935) **Each 35c; 3 for 90c**

Regal in bearing, with broadly flaring great white blossoms lit with gold in the throat. Heavy of substance, bold and strong in growing habit. HM AIS, 1936; AM, 1937.

SNOW VELVET (H. Sass, 1942) **Each \$2.50**

A white flower of very heavy substance, lit with gold about the center. The large flowers stay in good condition on the hottest days. Height 40 inches. HM AIS, 1942.

SOLID MAHOGANY (J. Sass, 1944) **Each \$7.50**

This grand new red is one of the finest dark Irises of recent years. Beautifully formed, the color is aptly described by the name. No haft venation and a deep bronze-gold beard accent the richness of the plushlike falls. Height 3 feet. HM AIS, 1944; AM, 1947. Shown in color on page 26.

SONRISA (DeForest, 1942) **Each \$4.00**

Coppery pink with yellow undertone having a metallic finish. Very wide segments, rounded form with slightly flaring falls and unusually large flowers. Difficult to describe, but we regard it as next to Casa Morena in merit among all DeForest introductions. HM AIS, 1945. See color plate on page 34.

SOUTHERN PACIFIC (Taylor, 1942) **Each \$2.00**

A new giant clear blue on the lavender side. It is free blooming and one of the largest Irises we have ever seen. A descendent of Sierra Blue, similar in habit. HM AIS, 1947.

SOUTHERN SNOW (Beck, 1947) **Each \$7.50**

A new white Iris originated in Chattanooga, Tenn., and which fills every qualification for an ideal white. Quite early, the standards and falls are both full and broad, very heavy in texture, and as white as purity itself. The heavy beard is yellow. Increases very fast and flowers abundantly. 3 feet.

SPARKLING BLUE (Grant, 1942) **Each \$2.50**

A well named blue Iris, almost flax-blue in color, with frosty overlay. Big and bold, heavy substance, superb branching. Height 40 inches.

SPINDRIFT (Loomis, 1944) **Each \$5.00**

Translucent, delicate seashell or coral-pink, with fiery tangerine beard to accentuate the color. This Iris achieved wide acclaim when shown as a seedling under the number TQ-70. Well branched, with stiff, willowy stems. HM AIS, 1945.



MULBERRY ROSE



SONRISA

SPOKAN (J. Sass, 1933) **Each 35c; 3 for 90c**

A solidly colored deep chestnut-red; of great size—one of the very largest—with an odd coppery suffusion throughout. The standards are of brownish tone, sort of light molasses tinted, and the center is highly lighted with gold. 3 feet tall; very hardy.

SPUN GOLD (Glutzbeck, 1940) **Each \$2.50**

Perhaps the most famous yellow Iris ever introduced. It has all of the desired qualities of size, good branching, tall stems and rich solid yellow color. Eagerly sought after because of its fine record; stock has remained scarce. HM AIS, 1939; AM, 1942; Dykes Medal, 1944.

STAINED GLASS (Wilhelm, 1939) **Each 75c; 3 for \$2.00**

Glowing red-copper self, one of the most brilliant Iris we have ever seen when viewed with the sun behind it. In such a light it resembles nothing quite so much as stained glass—rich and brilliant, almost aflame! Self colored, with orange beard. Medium height. HM AIS, 1940.

STARDOM (Hall, 1941) **Each 75c; 3 for \$2.00**

Termed onion-skin-pink by the color chart, this fine Iris is not really pink at all, but rather a smooth blend of coppery pink and apricot-buff. It has also been called salmon-rose. Beard is tangerine or brilliant orange. With its large blooms and luscious color it is certain to please you. HM AIS, 1940; AM, 1943.

STORM KING (Nicholls, 1940) **Each \$2.50**

The king of the black Irises. Although a somewhat slow increaser, its nearly black, silky blooms are unmatched by any other variety we have seen. Immense blooms, wide flaring falls with no haft markings. Always scarce. HM AIS, 1941.

SULTAN'S ROBE (Salbach, 1945) **Each \$7.50**

This new Iris comes to us with a flattering recommendation. Something different in the way of Oriental coloring—standards Van Dyke red to deep old rose; falls the same with golden overlay, especially on the upper half. There is a dash of violet-blue in the center of each fall. 36 inches tall. HM AIS, 1946.

SUNSET SERENADE (J. Sass, 1943) **Each \$4.00**

Introduced as the best of the Prairie Sunset seedlings to date and not surpassed thus far. A soft golden tan or light apricot-buff, lighter in tone than the parent, with very little rose or pinkish tints. As large as Prairie Sunset and taller. HM AIS, 1943; AM, 1945.

SUKEY OF SALEM (Nesmith, 1946) **Each \$12.50**

A blended self of ochre-red and rose with a brown flush on upper part of the falls. Not a dull Iris for it is brimming with bright blended colors so cleverly intermingled it is difficult to describe. Broad petaled, flaring, over three feet in height. HM AIS, 1946.

SYLVIA MURRAY (Norton, 1944) **Each \$7.50**

This new blue is derived from Great Lakes crossed with Shining Waters, lighter in color than either of the parents and with the silvery smoothness of pale blue silk. Enormous flowers, 40-inch stems, altogether a grand blue Iris. HM AIS, 1946.

TEA ROSE (Whiting, 1944) **Each \$4.00**

A blend of rose and pale gold, well on the way to true pink. It is a seedling of Matula crossed with China Maid. The color is strong and warm enough to be seen across the garden and yet clear and delicate as a Rose. 36 inches. HM AIS, 1945.

THE ADMIRAL (Hall, 1941) **Each \$1.00; 3 for \$2.50**

An intense blue, deeper than medium blue, but not really a dark shade. The form, finish and substance are outstanding. Withstands either sun, wind or rain equally well, lasts long in bloom and makes a wonderful garden clump. Bluish beard lends depth to the color. HM AIS, 1940; AM, 1944. Shown in color on page 17.

THE BLACK DOUGLAS (J. Sass, 1934) **Each 35c; 3 for 90c**

Large blackish purple of even tone, velvety surface and large flowers. If you want a black Iris and cannot afford the more expensive ones, try this. Hardy and increases fast.

THE CAPITOL (Maxwell-Norton, 1945) **Each \$7.50**

Combination of gleaming cream-white standards and falls with the most brilliant flame-orange beard and haft. Texture of the petals is Magnolia-like, beautifully formed, and the "house afire" beard lies on the falls like a gorgeous caterpillar. Tall growing and splendidly branched. HM AIS, 1946.

THE RED DOUGLAS (J. Sass, 1937) **Each \$1.00; 3 for \$2.50**

Simply colossal in size, as smooth and heavy as a piece of richest plush. It is deep rosy wine-red, solid at the haft, with a brownish cast near the center; beard rich orange. Not the reddest Iris but the coloring is gorgeously deep and intense. Dykes Medal, 1941.

THE SENTINEL (Hall, 1942) **Each \$1.00; 3 for \$2.50**

Burnished copper describes this new color in Iris. On the order of Casa Morena in general color tone, possibly a bit more coppery. Flowers are large, form and substance good, but it is closely branched and of medium height. However, it makes a very rich and glowing clump and the novel color stops all garden visitors.

THREE CHEERS (Cook, 1945) **Each \$9.00**

An amazingly brilliant bicolor similar to Amigo in pattern, but tall—42 inches—and richer and bolder in contrast. Standards blue-white; falls semi-flaring with narrow border like the standards. A Wabash seedling. HM AIS, 1946.

THREE OAKS (Whiting, 1943) **Each \$4.00**

This massive rose-pink blend opened the eyes of all the judges last season. Huge in size, beautifully blended tones of rose-pink and copper, and on very tall stems, it was one of the sensations of our garden. Lasts over an extra long period. Height 40 inches. HM AIS, 1945.

THREE SISTERS (DeForest, 1941) **Each \$1.50; 3 for \$4.00**

A distinct and exciting combination of pale creamy yellow standards and red-toned falls. In sunny weather the standards are almost white. A vigorous grower and rapid increaser, with abundant well branched stalks. In the originator's garden it averaged 36 to 40 inches. See page 33.

TIFFANJA (DeForest, 1942) **Each \$2.00; 3 for \$5.00**

A new and unique Plicata, having good form and thick substance. Smooth and clean cut; standards colonial buff; falls creamy white, definitely bordered buff, brushed at the haft and speckled around the border with light brown. This is a big flower, 42 inches tall. HM AIS, 1944; AM, 1946. Shown in color on page 23.

TIFFANY (H. Sass, 1938) **Each 50c; 3 for \$1.25**

Soft but decidedly yellow in color, with abundant stitching of bronzy pinkish violet. A gracefully frilled flower of full proportions; very large, vigorous growing, reasonably tall. About the best of the low-priced yellow Plicatas and will give any of them a run for their money. HM AIS, 1939; AM, 1943. Shown on page 18.

TOBACCO ROAD (Kleinsorge, 1942) **Each \$6.00**

When this Iris first opened in Dr. Kleinsorge's garden, it was so different, so remarkable in both color and form, that we lost all interest in the many other splendid seedlings in the same garden. Tobacco Road is a golden tobacco-brown self. Standards are upright and almost closed, with heavy midribs. The falls are broad, very wide at the haft and held stiffly horizontal. Height 32 to 36 inches, very good branching. HM AIS, 1944; AM, 1946.

TOKEN (Hall, 1939) **Each 75c; 3 for \$2.00**

Standards old gold flushed rose; falls rosy brown-red, with very little haft venation. Carries much of the salmony orange effect of the old variety Mary Geddes, but with less venation. Does not fade and is a husky grower, 38 inches tall, with blooms having a 7-inch spread.

TREASURE ISLAND (Kleinsorge, 1937) **Each 50c; 3 for \$1.25**

A truly gigantic flower of bright clear yellow, slightly lighter in the center of the falls. Tall stems, a fast increaser and easy grower. We have sold more rhizomes of Treasure Island than of any Iris we have ever introduced. You will not be disappointed in this splendid yellow. AM AIS, 1945.

TREVA (DeForest, 1945) **Each \$7.50**

A new glistening golden apricot self. With very wide standards and falls, and flaring form, it has that unusual quality of frostiness which distinguishes Gloriole. This one, however, has what might be termed golden frost! HM AIS, 1946.

VATICAN PURPLE (Whiting, 1943) **Each \$4.00**

Of bold stature and splendid form, this is one of the most striking newcomers in an old color class that welcomes such improvements. Deep but bright blue-purple, silky in finish but heavy in texture, without haft markings. It has wide spreading falls and three-foot stems. HM AIS, 1943.

VICE-REGAL (Miles, 1946) **Each \$4.00**

Here is a brand new Iris from Canada, one of the most richly colored seedlings we have ever grown. The standards and falls are almost identical in color, but the velvet of the latter makes them appear slightly deeper. Scarcely any haft marking—a supreme shade of glowing bronzy red-purple with bronze beard. 33 inches tall. Shown on page 25. HM AIS, 1947.

VISION OF MERZA (DeForest, 1944) **Each \$3.00**

Rose-brown on a cream ground, of heavy marbled rather than a stitched effect. This is not only an unusual and bizarre color pattern, but the flower is well shaped with wide segments and gigantic in size; 40 inches tall.

WABASH (Williamson, 1937) **Each 75c; 3 for \$2.00**

Pure white standards and rich velvety deep violet falls bordered white—the most striking Amoena of all. Very tall, branched above the middle of the stalk with a profusion of large, slightly ruffled blossoms. The color plate on page 14 shows this popular Iris in perfect detail. HM AIS, 1937; AM, 1938. Awarded the Dykes Medal in 1940.

WASATCH (Thorup, 1935) **Each 40c; 3 for \$1.00**

Huge Plicata of stunning size, clean white with blue stitching in the buttonhole manner. Heavy stalks and very broad foliage, medium in height, blooming among the first of the tall bearded varieties.

WEST POINT (Nicholls, 1938) **Each 75c; 3 for \$2.00**

Standards bright indigo-blue, very broad and well held; falls intense indigo-blue with a brownish cast at the haft. The beard is wide and extra heavy, like the epaulets on a blue uniform. A magnificent Iris. Very late. HM AIS, 1940.

WHITE CITY (Murrell, 1939) **Each \$1.50**

Dykes Medal Winner in England in 1940. An immense flower of blue-white, with deeper blue flush at the heart. A stalwart grower, the great flowers possessing a silken finish and ice cold effect. AM AIS, 1945.

WHITE WEDGEWOOD (Grant, 1943) **Each \$7.00**

A large porcelain-white with blue at the base of the white beard, making the beard appear quite blue. Something new in whites, along the line of And Thou and White City. Almost 4 feet in height, quite early. HM AIS, 1943; AM, 1945.

WINSTON CHURCHILL (Stevens, 1944) **Each \$15.00**

A striking new red Iris. Deep but bright crimson, the standards exhibiting a copper glow while the falls are very dark but gleaming maroon. Heavy gold beard. From New Zealand.

WINTER CARNIVAL (Schreiner, 1941) **Each \$1.50; 3 for \$4.00**

A fine hardy white, bred in Minnesota. Widely flaring falls, snow-white in color, the throat heavily tinted gold. Branching is excellent and the stout stems hold the big blooms well aloft. This is surely one of our best whites. HM AIS, 1942. See page 28.

WM. MOHR (Mohr, 1925) **Each 35c; 3 for 90c**

The entire bloom is a self of pale rosy lilac closely netted and veined deep violet, producing a weird, yet very lovely effect. A monster flower of medium height, with small foliage. Does better if divided and transplanted at least every other year.

WORTHINGTON (Cook, 1943) **Each \$3.50**

Harmonious bicolor of great size and pleasing rosy red effect, the color particularly clear and bright. Of strong growth, three feet in height. Brighter than the old but popular Ethel Peckham, with cleaner haft and much larger blossoms.



MISTY GOLD



ALADDIN'S WISH

HOW TO DIVIDE

From a single rhizome planted in 1942 this crowded clump was overdue for dividing in 1947. Note rhizomes growing over one another in center of clump.

After being dug, clump was cleaned with stream from hose. Note that healthy, growing rhizomes circle the clump, while those in center have very few white feeding roots.

Healthy, growing rhizomes are separated from old bloomstalks. Some prefer "doubles" as in foreground for replanting. Wash rhizomes thoroughly before replanting.



The above series of pictures is taken from the new book **"THE IRIS, AN IDEAL HARDY PERENNIAL,"** recently published by the American Iris Society. It has been a long time since a good Iris book has been available, especially one of an up-to-date nature. This one is as nearly complete as the experts have been able to make it—chapters on the various groups, types and species, every phase of culture, the fine points of Iris breeding, diseases and pests, all about the American Iris Society, Iris judging, photography, use of Irises in the garden, and so on. 224 pages, well illustrated. **Heavy, leather-like paper binding, \$1.50; permanent cloth binding, \$2.50.** Send your order to us and we will ship promptly.

JOIN THE AMERICAN IRIS SOCIETY, membership in which will bring you four meaty bulletins per year. This is the best way to keep informed on Iris progress, the latest awards, what the experts think. These bulletins are really books themselves, generally containing 100 pages or over per copy. Dues \$3.00 per year and well worth it. Send your remittance to us, we will enter membership for you.

Come to Oregon in 1949! The annual meeting of the American Iris Society will be held in Portland, Oregon, in early mid-May next year and you will have a rare opportunity to see many famous Iris gardens of the Pacific Northwest at their best. Start planning now to be among those present.

A FEW CULTURAL TIPS: While it is true that Irises are among the easiest of all plants to grow, anyone who plans to grow even a few Irises should not be content to achieve merely indifferent results. Most Irises will succeed well in any type of soil from almost pure sand to stiff clay. Where one may choose, a medium heavy, fairly well enriched soil—in other words, ordinary good garden soil—is to be preferred. Go easy on fertilizers, especially animal fertilizer; this sometimes promotes lush growth and eventual rot! Bone meal, well worked in, is safe, and good.

Don't plant in deeply shaded situation, and avoid places where roots of large trees or big shrubs rob the soil of plant food and moisture. Be sure drainage is good.

Plant at least two feet apart; after first year, sparse appearance will have vanished. If immediate effect is desired, plant in groups of three of a kind, about a foot apart, the groups at 3-foot intervals.

DISEASES AND PESTS: Although comparatively free from garden enemies, soft rot of the rhizomes or spotting of the foliage sometimes manifests itself. The former, usually the result of poor drainage or an over-wet season, can be controlled by cutting back to sound tissue or replanting. Leaf spot, like the measles, is not fatal. Cut away and burn infected foliage and dust with copper or Bordeaux solution. For Iris borer, or more detailed information on any of these subjects, drop a post card and ask for our 3-page leaflet on "Culture of Bearded Iris." It was included as an insert in last year's catalog, but it will be sent without charge to anyone requesting it.

AND PLANT AN IRIS

Before planting a new bed of Iris, dig in plant food and cultivate well. When ready to plant, dig two slanting holes, leaving a dividing ridge in the center.

Place rhizome directly over center of ridge and spread feeding roots evenly to each side. By spreading roots to either side, the plant is securely anchored.

Pull dirt in towards plant from either side. By pressing on top of root, proper planting depth may be regulated. Firm with foot and water well.



AMERICAN IRIS SOCIETY 1948 OFFICIAL SYMPOSIUM OF 100 MOST POPULAR IRIS

Compiled by Kenneth D. Smith and Selected by 206 Accredited Judges of the American Iris Society.

Varieties in Order of Numerical Average	1947 Rating	Varieties in Order of Numerical Average	1947 Rating	Varieties in Order of Numerical Average	1947 Rating
1. Ola Kala ('43)	2	33. Garden Glory ('43)	68	67. Cordovan ('46)	—
2. Chivalry ('44)	4	34. Spun Gold ('40)	17	68. Lake Breeze ('45)	42
3. Great Lakes ('38)	1	35. Prairie Sunset ('39)	5	69. Golden Majesty ('38)	48
4. Helen McGregor ('46)	—	36. Extravaganza ('44)	34	70. Lord Dongan ('40)	37
5. Blue Shimmer ('42)	6	37. Chantilly ('45)	39	71. Los Angeles ('27)	55
6. Bryce Canyon ('44)	10	38. Cherie ('47)	—	72. Red Valor ('36)	22
7. Elmohr ('42)	3	39. Zantha ('47)	—	73. Francelia ('44)	28
8. Master Charles ('43)	8	40. Lynn Langford ('46)	—	74. City of Lincoln ('37)	50
9. Azure Skies ('43)	15	41. Moonlight Madonna ('43)	22	75. Harriet Thoreau ('44)	94
10. Sable ('38)	9	42. Fair Elaine ('38)	36	76. Minnie Colquitt ('42)	65
11. Blue Valley ('47)	—	43. Lake George ('45)	27	77. Arab Chief ('44)	—
12. Blue Rhythm ('45)	44	44. Remembrance ('42)	31	78. Goldbeater ('44)	46
13. Cascade Splendor ('45)	56	45. Pink Cameo ('46)	—	79. Snow Carnival ('42)	53
14. Berkeley Gold ('42)	11	46. Golden Fleece ('40)	23	80. Fire Dance ('47)	—
15. Amandine ('46)	—	47. Grand Canyon ('41)	49	81. Cape Bon ('45)	—
16. Wabash ('36)	14	48. Sharkskin ('42)	62	82. Three Oaks ('43)	—
17. Mulberry Rose ('41)	21	49. Deep Velvet ('39)	24	83. Elsa Sass ('39)	79
18. Lady Mohr ('44)	33	50. Daybreak ('41)	13	84. Mary Vernon ('42)	75
19. Amigo ('34)	16	51. Black Banner ('47)	—	85. Gloriele ('33)	71
20. Katherine Fay ('45)	20	52. Firecracker ('43)	59	86. Captain Wells ('41)	38
21. New Snow ('46)	—	53. Chamois ('44)	54	87. Fantasy ('47)	—
22. Black Forest ('45)	—	54. Suzette ('45)	63	88. Mexico ('43)	—
23. Lady Boscawen ('46)	—	55. Fall Days ('47)	—	89. Miogem ('47)	—
24. Ranger ('44)	25	56. Sylvia Murray ('44)	—	90. Priscilla ('42)	97
25. Tobacco Road ('42)	7	57. Bandmaster ('44)	51	91. Jasmine ('44)	40
26. Violet Symphony ('40)	11	58. The Red Douglas ('37)	45	92. Cloth of Gold ('45)	—
27. Snow Flurry ('39)	19	59. Dreamcastle ('43)	64	93. Gypsy ('44)	—
28. Cesa Morena ('43)	18	60. Spindrift ('44)	80	94. Esquire ('46)	—
29. Rocket ('45)	29	61. Syringa ('47)	—	95. Mellowglow ('42)	76
30. Tiffanja ('42)	35	62. Nightfall ('42)	78	96. China Maid ('36)	72
31. The Admiral ('41)	41	63. Cloud Castle ('44)	67	97. Distance ('46)	—
32. Scild Mahogany ('44)	26	64. White Wedgewood ('43)	47	98. Easter Bonnet ('44)	—
		65. Pink Reflection ('42)	29	99. Desert Song ('46)	—
		66. Rainbow Room ('46)	—	100. Christabel ('36)	73



MOUNT ROYAL



ROMAN STAR

DAFFODILS

Like a golden sunrise, they usher in the springtime and another glorious garden season!

Probably the most appreciated of all flowers, by those who know them, and at the same time the least known and appreciated by a vast majority of confirmed gardeners. Few, indeed, are the lovers of choice garden material who have cast their eyes upon such fine things as Roman Star, Moulin Rouge, Delaware or Lady Kesteven, and even the relatively inexpensive sorts like Tunis, Carlton, Red Shadow and a score of others are strangers to most people. Plan now to enjoy the thrill of flowering some of these splendid creations in your garden next spring.

**NO DAFFODILS SHIPPED AFTER
OCTOBER 15th!**

They will succeed in any ordinary good garden soil; they are hardy beyond question. Plant them in the fall only, 6 to 8 inches deep. In very severe climates a mulch of coarse material applied after the ground freezes will prevent heaving and thawing.

NOVELTY COLLECTION

Octavianus	Moulin Rouge
Scarlet Leader	Golden Pedestal
Lady Kesteven	Roman Star
Quicksilver	Mrs. John Bodger
Bridegroom	Veronica

1 each, 10 bulbs, for \$10.00

3 each, 30 bulbs, for 25.00

All Double-Nose Bulbs

Labeled and Postpaid





MOULIN ROUGE

DAFFODILS THAT ARE DIFFERENT

ACTAEA Each 20c; \$2.00 per Doz.

Broad, snow-white perianth of great substance and good form. Very large red eye. Considered the largest and most beautiful Poeticus. Shown on page 46.

ADLER Each 40c; \$4.00 per Doz.

A really marvelous flower with perianth of purest white, overlapping and opening nearly flat, nearly 4 inches across. Cup is pure chrome-yellow shading to blood-orange at the deeply frilled edge. Shown on page 41.

ALASNAM Each 25c; \$2.50 per Doz.

A tall and very deep yellow Trumpet Daffodil of the King Alfred type. The trumpet extra wide and of richest golden yellow. Early, with heavy stems.

BEERSHEBA Each 50c; 3 for \$1.25

All white; a large, perfectly formed flower nearly 5 inches across. The perianth is flat and the trumpet is long and flanged at the lip. A splendid show flower of remarkable substance and an ideal garden subject where it never fails to excite comment. Increases rapidly. See page 47.

BERYL Each 50c; 3 for \$1.25

A lovely little Cyclamineus hybrid bearing graceful flowers with primrose-yellow reflexing petals and a small globular bright orange cup, shading to gold. Ideal for the rock garden and very seldom seen. Height 8 inches. Shown on page 44.

BRIDEGROOM Each 75c; 3 for \$2.00

Large flower, creamy perianth, yellow crown with narrow edging of bright orange. A very late new variety of heavy substance and a wonderful exhibition Daffodil.

CARLTON Each 25c; \$2.50 per Doz.

A gigantic and perfectly formed clear, bright yellow, without a trace of orange. Words cannot convey an idea of how the excellent flower differs from other yellow Daffodils, but when you have seen it you will agree there is nothing comparable to it. The crown is huge and rather short, crinkled at the rim. Magnificent in foliage as well as in flower.

CHEERFULNESS Each 20c; \$2.00 per Doz.

A cluster-flowered Daffodil often referred to as a "double Narcissus." The tall, erect stems produce a cluster of several small blooms, with broad, rounded, creamy white perianth and full double center of creamy white and yellow. Very sweet scented. Colored illustration on page 47.

COVERACK PERFECTION Each \$5.00

A really huge novelty with most unusual coloring—pure white petals that are wide and overlapping, a broad and quite flat crown of creamy buff edged salmon-gold. If you want a Daffodil of utmost distinction, treat yourself to one of these. Large, tall, and lasts incredibly long in flower. Shown on opposite page.

CROESUS Each 20c; \$2.00 per Doz.

A great favorite for many years. Clear canary-yellow perianth; rich orange crown slightly deeper at the rim. The segments are extra wide and the short crown fairly blazes! Shown in color on page 47.

DAISY SCHAEFFER Each 40c; 3 for \$1.00

A giant Leedsii of wonderful proportions, the color having an effect of lemon-ice. The large, pure white perianth petals are overlapping, the medium length crown is deep lemon near the edges and lightens to pale lemon—almost white—at the base. Very fine in every way. 20 inches tall.

DAMSON Each 25c; \$2.50 per Doz.

One of the most brilliant flowers in the spring garden—a striking contrast of creamy white perianth shaded yellow at the base, set with a long cup of deep Fuchsia-red. This is the first time this variety has been available at a popular price. Early. See page 42.

DAWSON CITY Each 25c; \$2.50 per Doz.

This is a big deep yellow Trumpet Daffodil, fine for either garden planting or for exhibition. Broad, flat perianth of smooth substance, well formed, flanged trumpet, of a self golden yellow.

DELAWARE Each 50c; 3 for \$1.25

Cup opens a golden Quince color, changing to creamy lemon and is deeply crinkled. Against the spotless white background this provides a striking contrast. A very new and unusual Daffodil, strong growing and free flowering. Shown in color on page 44.

DIANA KASNER Each 20c; \$1.75 per Doz.

Cream-yellow perianth and large fluted yellow cup with blood-red frill; very free flowering and extra late. A splendid garden variety and compares favorably with many more expensive sorts.

DICK WELLBAND Each 30c; 3 for 75c; \$2.50 per Doz.

With a perianth of pure white and cup of brightest flame-orange this is one of the finest in its class. One of the remarkable qualities of this flower is that the color of the cup does not fade but seems rather to intensify with age. Extra late and long lasting; short but wide cup, tall stems and wide foliage.



ADLER



MRS. JOHN BODGER



COVERACK PERFECTION



FORTUNE



ESKIMO Each \$1.25; 3 for \$3.00

A huge white Daffodil of fine build and great substance. Perianth is pure white, wide and overlapping with pointed tips; the big trumpet is heavy and opens widely. This flower opens delicate primrose and fades to ivory-white. Shown on page 43.

FEBRUARY GOLD Each 20c; \$2.00 per Doz.

One of the finest of the long trumpet varieties to bloom in the spring garden. Rich golden color, the perianth petals reflexed in Cyclamen fashion; trumpet deeper gold. See page 39.

FORTUNE Each 40c; 3 for \$1.00

No Daffodil collection is complete without Fortune. The wide perianth is solid bright yellow; the crown is bold and heavy, brilliant coppery red-orange in color. Extremely early, coming into bloom almost a week ahead of other varieties. A gorgeous flower on 24-inch, stiff stems. Illustrated on page 41.

FRANCISCA DRAKE Each 25c; \$2.50 per Doz.

An unusual flower of rare beauty. Perianth of silvery white, tinted gold at the base; cup wide and deep, golden yellow at the base changing to flame-orange. The edge is densely frilled; stamens bright yellow. Early, with tall stems far above the foliage. See page 47.

GERTIE MILLAR Each 40c; \$4.00 per Doz.

A real giant of a flower, which, despite its size, is delicately beautiful because of its soft ethereal coloring. Perianth is clear white; the short but wide trumpet opens lemon-yellow and quickly changes to ivory-buff, holding this color to the end. Colored picture on page 46 is greatly reduced in size.

GOLDEN PEDESTAL Each 75c; 3 for \$2.00

Solid bright gold, with a glistening sheen not usually seen on Daffodils. So perfectly formed that it almost appears to be artificial! Of Incomparabilis type, with slightly shorter cup than most yellow trumpets, this flower is a sure-fire winner at the shows and a standout in the garden. Very tall stems. Shown below.

DAMSON



MRS. R. O. BACKHOUSE



GOLDEN PEDESTAL



ESKIMO



ROYAL SOVEREIGN

GOLDEN PERFECTION Each 30c; \$3.00 per Doz.

A Jonquil hybrid which produces two flowers to the stem, deep bright gold in color, with widely expanded cup in exact harmony. This has the same rare mica sheen as Golden Pedestal. The picture on next page hardly does it justice. Shown on page 44.

GLORIOUS Each 25c; \$2.50 per Doz.

A fiery little bunch-flowered Poetaz hybrid bearing great quantities of fragrant flowers. Stems are tall and the bulbs increase rapidly. Clear white perianth petals with red-orange eye and yellow heart. In color on page 45.

HADES Each 75c; 3 for \$2.00

A rather late Incomparabilis with bright red cup described as "cherry-red." This is set against background petals of soft creamy white, giving it a warm glow. The contrast of colors is startling. Tall, wiry stems and good sized flowers.

JOHN EVELYN Each 25c; \$2.50 per Doz.

An outstanding favorite in the Daffodil world. Large, pure white perianth opens perfectly flat and is 4 to 5 inches across. The large, flat cup of lemon-yellow is densely frilled or shirred to the base, as well illustrated on page 46. Unexcelled for either the garden or the show bench.

LADY HILLINGDON Each 20c; \$2.00 per Doz.

This graceful flower has the deep butter-yellow of the Jonquils, but is larger in size; broad perianth petals, medium length trumpet. Clean, self colored and very fragrant, with flowers in clusters of two or three on tall stems.

LADY KESTEVEN Each \$1.00; 3 for \$2.50

Words fail to describe this wonderful Daffodil adequately. The perianth is as white as new snow, well formed and substantial; the cup is brilliant deep red—the most startling contrast of colors imaginable! Very tall; quite late.

LOVENEST Each 40c; 3 for \$1.00

A delicate pink-toned variety, the trumpet opening apricot-lemon and gradually turning to pink at the rim. Perianth is white. Earlier than the pink Mrs. Backhouse.

MOULIN ROUGE Each 50c; 3 for \$1.25

Very lovely double. Long primrose petals shading to cream down the center, short petals deep yellow-orange, giving a tri-color effect. Perianth light citron-yellow, the orange cup deeply frilled. Very late. Illustrated on page 40.

MOUNT ROYAL Each 75c; 3 for \$2.00

A wide spreading deep yellow trumpet Daffodil, with perianth having three base petals extra wide; the three inner ones being narrower and more curved. A stunning feature of this flower is the tremendously large trumpet—see page 38. Very late; noble in appearance.

MRS. JOHN BODGER Each \$1.00; 3 for \$2.50

This new white trumpet Daffodil is regarded by some as the very finest of its type and color. When fully open it is as white as new snow, and is lovely in all stages. A very late variety, it opens deep ivory to canary, becoming lighter each day for about three days. Then it lasts for a full week or more in spotless perfection. Shorter than Beersheba. Shown on page 41.

MRS. R. O. BACKHOUSE Each 60c; 3 for \$1.50

This is the famous "pink trumpet" Daffodil. Fine informal perianth of ivory-white, the inner petals slightly twirled. The trumpet is slim and long, opening apricot-pink and turning true pink, deeper at the crinkled rim. Delicately beautiful but of exceptional substance. Belongs in every collection. See page 42.

NOVA SCOTIA Each 30c; \$3.00 per Doz.

Very large, flat, golden yellow cup with heavily fringed, deep orange margin; perianth creamy white. A new Incomparabilis.

OCTAVIANUS Each \$1.75; 3 for \$4.50

An exceptional flower of beautiful proportion and finish, big and bold. A huge trumpet, recurved, of greenish moon-yellow, is set upon a clear pale primrose perianth. There is sharp contrast in the two colors. Looks right up at you. Very late and long lasting.

QUICKSILVER Each \$1.25; 3 for \$3.00

Well named silvery white flower of pleasing proportions. A new, long-crowned Leedsii that is exceedingly graceful and fine for either garden or show.



DELAWARE

RED SHADOW Each 30c; \$2.50 per Doz.

Extra late; one of the last of all, with much of the color found in Fortune, but the perianth is lighter yellow. It is a splendid big flower with large cup of deep yellow margined red-orange. Increases fast and blooms very freely. See page 47.

ROMAN STAR Each \$1.50; 3 for \$4.00

One of the most sensational varieties we have seen and one that is rarely offered. The smooth, creamy perianth petals are so wide they almost completely overlap; the short crown is heavily fringed and is margined fiery red-orange. Very prominent stamens. Shown on page 38.

ROXANE Each 40c; 3 for \$1.00

Almost white, a solid deep cream or ivory-toned big trumpet Daffodil with heavily crinkled brim. Very early but lasts until past midseason. This is a flower of altogether different appearance as compared to either Beersheba or Mrs. Bodger. All three would give you a splendid selection of whites.

TWINK



BERYL

ROYAL SOVEREIGN Each 40c; 3 for \$1.00

As shown on page 43, this is probably the most graceful of all the double Daffodils and consists of a charming combination of colors. The creamy white petals are interspersed with a crinkled and frilled center of primrose-yellow, shading paler as the flower develops. This unusual Daffodil appeals to everyone's fancy.

SCARLET LEADER Each \$1.50; 3 for \$4.00

If you are looking for color and plenty of it, here is something that will certainly please. The cup is so very wide and flat, crinkled at the brim, and such a deep shade of blood-orange, that the cream perianth is almost half covered. Formerly very expensive. A real novelty. Early.

GOLDEN PERFECTION



SHERMAN**Each 50c; 3 for \$1.25**

Creamy white perianth that is broad and overlapping, with heavily frilled cup of deep orange-yellow. Anthers are conspicuously colored apricot. Buds hang down but flowers stand up well, making a pretty contrast. Blooms very late.

SILVER CHIMES**Each \$1.25; 3 for \$3.00**

One of the prettiest of the small-cupped Triandrus hybrids. Frequently produces heads of six or more waxy flowers per stem, with pure white perianth and pale primrose, globular cup. Delightfully fragrant.

SILVER STAR**Each 25c; \$2.50 per Doz.**

Perfect broad-petaled, star-shaped perianth of pure cream-white, with fine proportioned and wide mouthed trumpet of primrose, changing to cream-white just a shade deeper than the background. Free flowering, with long, stately stems.

THALIA**Each 30c; \$3.00 per Doz.**

An exquisite flower of unusually pleasant appearance; three to four pure white flowers on one stem. Often described as the "Orchid Narcissus." Thalia is sold to almost all flower lovers who see it in bloom here. Ideal in every way, especially for corsages and bouquets. See page 39.

**GLORIOUS**

**PLUMP
DOUBLE-NOSE
BULBS—**

**THE KIND
THAT PRODUCE
TWO OR MORE
FLOWERS PER
BULB**

**TREVITHIAN****Each 25c; \$2.50 per Doz.**

A Jonquil hybrid bearing two or more flowers per stem, soft lemon-yellow in color. A good companion to such types as Thalia and Golden Perfection, but of an altogether different shade. Sweet scented.

TUNIS**Each 35c; \$3.50 per Doz.**

Invariably admired and promptly bought by all who see it. The perianth is cream, 4 to 5 inches across; the very widely flaring trumpet a peculiar shade of apricot-buff, approaching salmon. This color is especially strong around the fluted margin. When first opening, the impression is that of a white and lemon bicolor, but it continues to grow in size and height while the true color develops. Early and long lasting.

TWINK**Each 25c; \$2.50 per Doz.**

By far the finest low priced double Daffodil. It is quite early, prolific, and much superior to the old double types. Alternate petals of light yellow and brilliant burnt orange, a fluffy blossom which creates a splash of color in the garden and an exciting effect as a cut flower in the home.

VERONICA**Each \$1.50; 3 for \$4.00**

A very new and rare giant Leedsii classed as a "pink" Daffodil, but it is more on the apricot side with pinkish flush. Perfectly rounded wide perianth of pure white; the cup is deeply fluted and frilled, solid buffy apricot flushed pink. Novel and very beautiful.

**DAISY SCHAEFFER**



CROESUS



CARLTON

DAFFODIL COLLECTIONS

DAFFODIL COLLECTION "A"

Actaea	Gertie Millar
Carlton	John Evelyn
Cheerfulness	Red Shadow
Croesus	Silver Star
Dawson City	Thalia
Francisca Drake	Tunis

1 each, 12 bulbs, for \$ 2.75
 3 each, 36 bulbs, for 7.50
 10 each, 100 bulbs, for 20.00

ALL DOUBLE-NOSE BULBS
LAELED AND POSTPAID



ACTAEA



**GERTIE
MILLAR**



**JOHN
EVELYN**



RED SHADOW



FRANCISCA DRAKE

DAFFODIL COLLECTION "B"

- | | |
|-----------------|-------------------|
| Diana Kasner | Nova Scotia |
| Alasnam | Golden Perfection |
| February Gold | Daisy Schaeffer |
| Damson | Roxane |
| Glorious | Lovenest |
| Lady Hillington | Twink |

1 each, 12 bulbs, for \$ 3.00
 3 each, 36 bulbs, for 8.50
 10 each, 100 bulbs, for 25.00

DAFFODIL COLLECTION "C"

- | | |
|---------------|-----------------|
| Adler | Trevithian |
| Beersheba | Mount Royal |
| Dick Wellband | Royal Sovereign |
| Fortune | Sherman |
| Hades | Mrs. Backhouse |

1 each, 10 bulbs, for \$ 4.00
 3 each, 30 bulbs, for 10.00

ORDER YOUR BULBS NOW,
 WHILE STOCKS ARE COM-
 PLETE! MANY VARIETIES
 ARE SURE TO BE SOLD OUT
 BY PLANTING TIME



CHEERFULNESS



DICK
 WELLBAND



BEERSHEBA



ELMOHR

IRIS · DAFFODILS
for 1948

Coolley's
GARDENS
SILVERTON · OREGON